

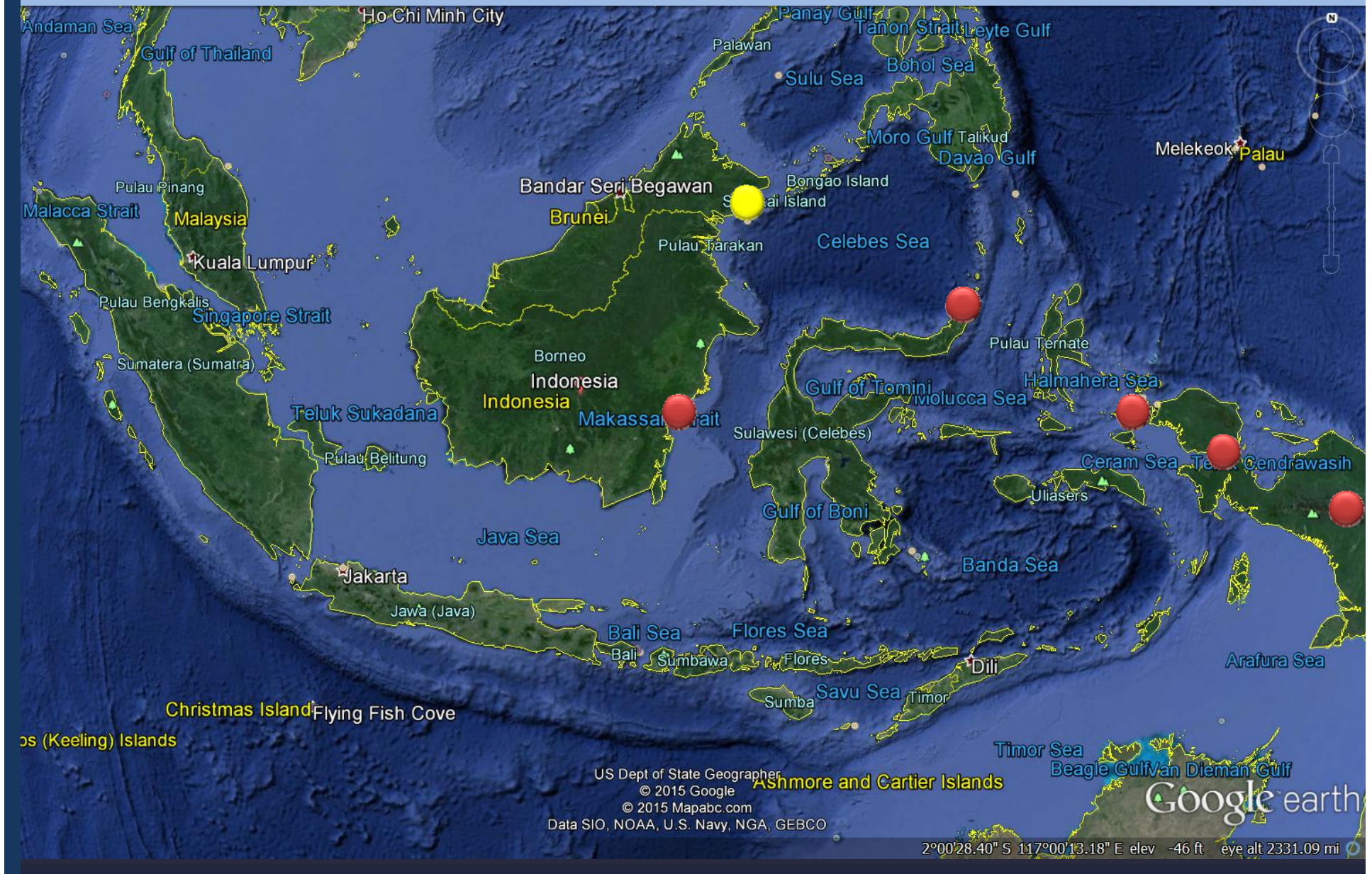


Workshop:
Application of Knowledge
Management in Scaling up
Public and Private Sector
Investments in Blue

**Marine Spatial Planning/
Integrated Coastal Planning
Experiences in Indonesia &
Malaysia**

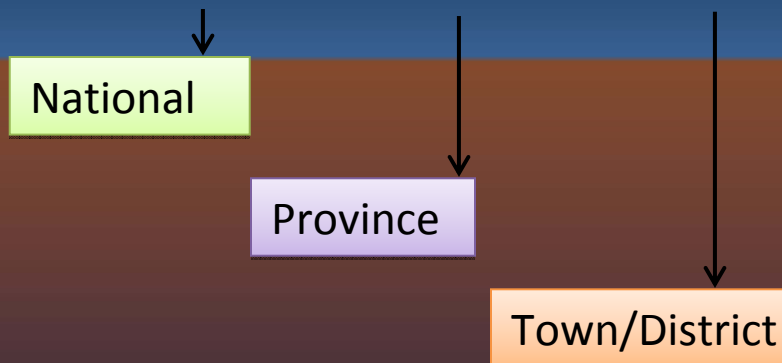
Monique Sumampouw
WWF Malaysia

Project Sites



Spatial Plan Regulation Indonesia

- UU No. 26 tahun 2007, Spatial Planning;
 - Includes: land, sea and air
 - Considering the geographic area of Indonesia that highly vulnerable to the disasters.
 - RTRWN, RTRWP, RTRWK



The need of MSP, Objective, Location, time & Initiator

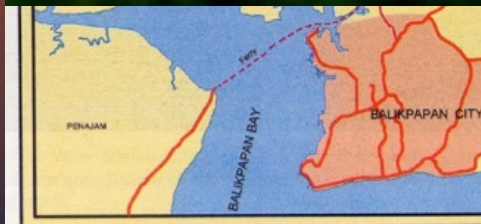
Balikpapan Bay	Bintuni Bay	North Sulawesi	Raja Ampat	Papua Province
Conservation	Conservation, Economy, Cultural	Conservation	Conservation	Governance
Dugong, Irawady Dolphin, Fishery, mangrove	Marine biodiversity (Mangrove), Gas	Whale Migratory Route MPAs, Tourism	MPAs, Coral reef, Mamalia, Shark, Fishes	Spatial Planning: land and sea
Strategic Plan of Balikpapan Bay	Marine & Coastal Resources Identified	Marine & Coastal Resources Identified	MSP to Local Planning Body	Spatial Plan enactment of Papua Province endorsed by November 2014.
2003 - ..	2001 - 2014	2000	2010	2009 -2014
Province, District & City	District	Province, 2 Cities	District	Province
USAID, Government	USAID, BP	USAID, Government	Conservation International	Government, USAID

KALIMANTAN





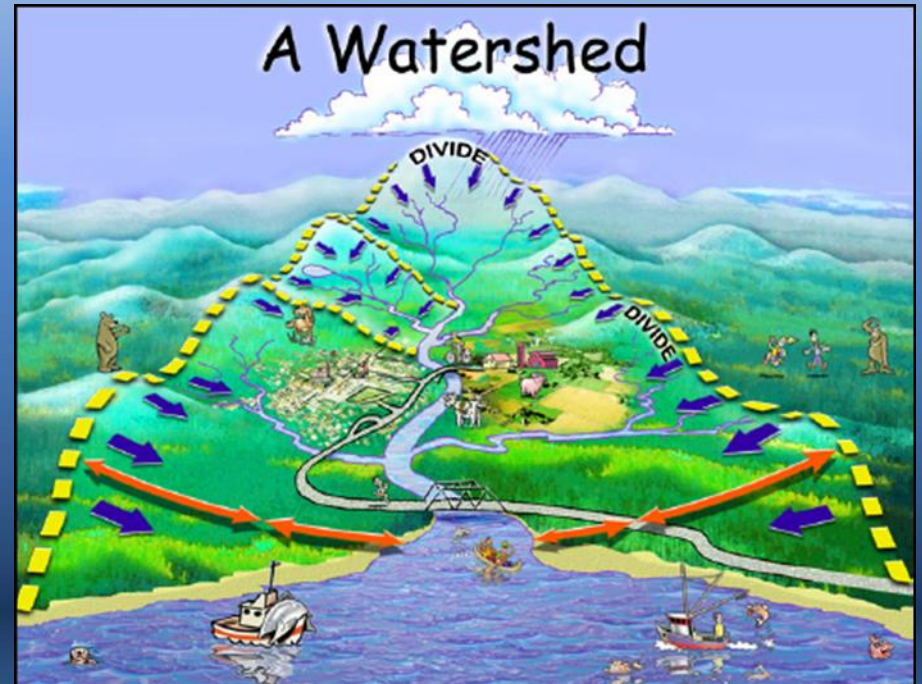
Balikpapan Bay





Process

- Participatory Approach



Regional Planning Body as leading agency

Result: Integrated Strategic Plan of Balikpapan Bay,
Management Body formed, 3 years of sustainable funding
from Government (app 80,000USD/year)

Lesson Learned From Balikpapan

- Recognize that building capacity in partner organizations must occur simultaneously with building capacity within the project team
- Work at multiple levels and with multiple sectors simultaneously so that coordination is maximized and the potential for miscommunication is minimized.
- Be prepared to both lead and take a backseat role in the planning process



Visit Balikpapan

Bintuni Bay - Papua





- 2.25 Million Hectare Mangrove Forest, Second biggest Mangrove area in Asia after Sundabarn in India
- 160 spesies of birds, 106 fish & crustacean species,
- 5 billion USD gas project operate by BP
- 7 big ethnic group of Papuan
- World War II reliec, heritage



2001



BINTUNI BAY NOW

- Rencana Tata Ruang Laut dan Pesisir
- Kabupaten Teluk Bintuni
- **(Bintuni, 10/2014)**, Bidang Tata Ruang Prasarana Fisik dan Wilayah Badan Perencanaan Pembangunan Daerah Teluk Bintuni menggelar kegiatan **Penyusunan Rencana Tata Ruang Laut dan Pesisir** kepada beberapa SKPD di lingkungan Pemda Teluk Bintuni. Kegiatan ini dilaksanakan pada tanggal 31 Oktober 2014.
- **Penyusunan Rencana Tata Ruang Laut dan Pesisir diatur dalam UU 27/2007** pasal 5, disebutkan bahwa Pengelolaan Wilayah Pesisir meliputi kegiatan perencanaan, pemanfaatan, pengawasan, dan pengendalian terhadap interaksi manusia dalam memanfaatkan Sumber Daya Pesisir serta proses alamiah secara berkelanjutan dalam upaya meningkatkan kesejahteraan masyarakat dan menjaga keutuhan Negara Kesatuan Republik Indonesia.
- **Kepala Bappeda Bintuni** DR. Alimuddin, MM mengatakan bahwa rencana tata ruang laut dan pesisir harus terencana dengan baik, perencanaan merupakan tahap awal dari segala kegiatan yang akan dijalankan. **Perencanaan tata ruang laut dan pesisir sangatlah bermanfaat demi menjaga potensi hasil laut dan pesisir, yang terpenting adalah semua elemen harus bekerjasama menjaga dan melestarikan potensi yang ada agar tidak terjadi kerusakan.** Lebih lanjut DR. Alimuddin, MM mengharapkan bahwa dari potensi wilayah laut dan pesisir yang ada di Teluk Bintuni seperti ikan, udang, kepiting, mamalia laut dan mangrove dapat terjaga dengan baik.





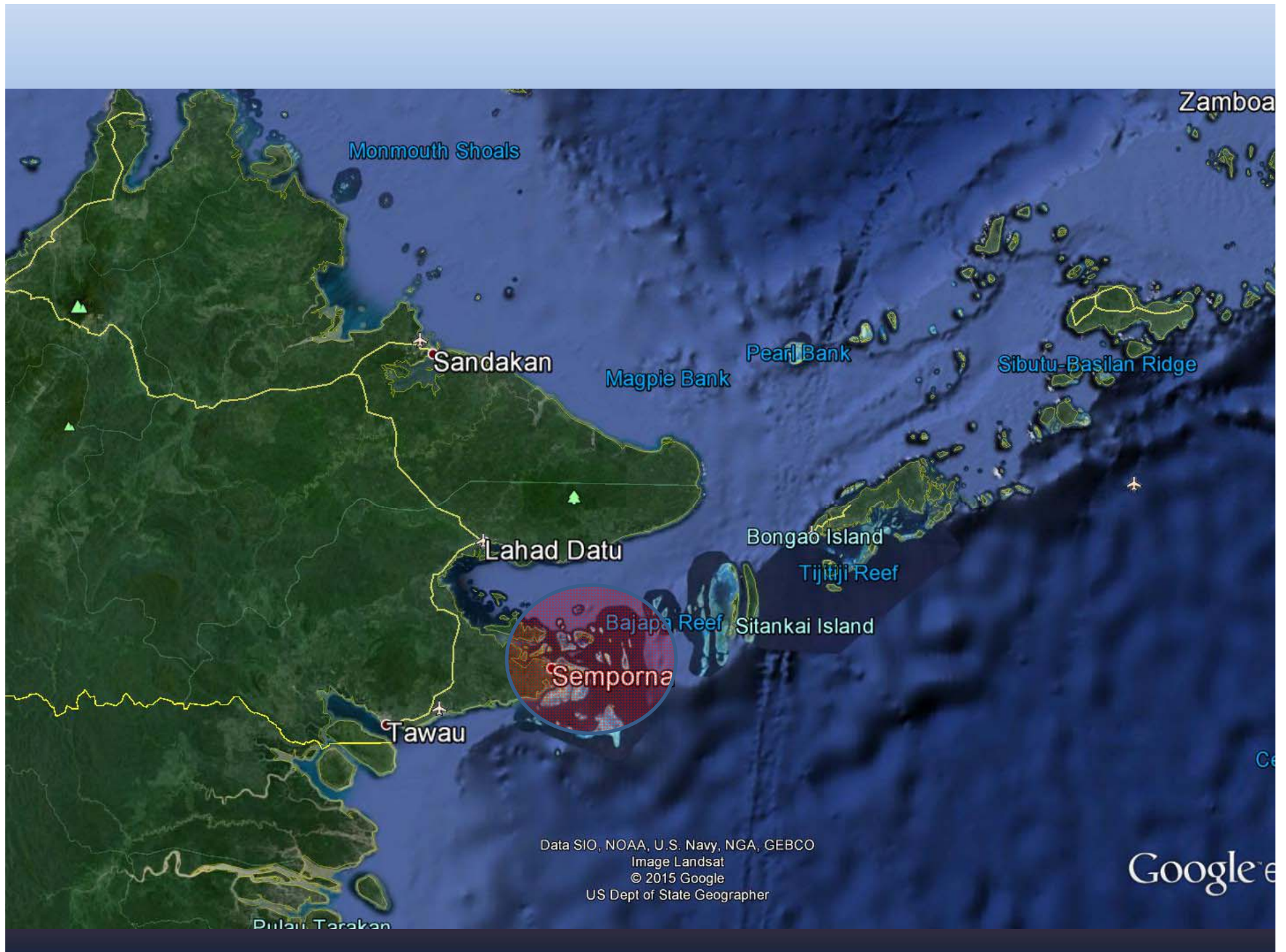
PAPUA PROVINCE



The need of MSP, Objective, Location, time & Initiator

Balikpapan Bay	Bintuni Bay	North Sulawesi	Raja Ampat	Papua Province
Conservation	Conservation, Economy, Cultural	Conservation	Conservation	Governance
Dugong, irawadi Dolphin, Fishery, mangrove	Mangrove, Gas, marine biodiversity	MPAs, Tourism	MPAs, Coral, Mamalia, Shark, Fishes	Spatial Planning: land and sea
Strategic Plan of Balikpapan Bay	Marine & Coastal Resources Identified	Marine & Coastal Resources Identified	MSP to Local Planning Body	Spatial Plan enactment of Papua Province endorsed by November 2014.
2003 - ..	2001 - 2014	2000	2010	2009 - 2014
Province & City	District	Province, 2 Cities	District	Province
USAID, Government (local planning body)	USAID, BP	USAID, Government	Conservation International	Government, USAID







District of Semporna

Location:

South Eastern Coast of Sabah, Sandwich between the Districts of Kunak and Tawau

Area :

land mass: 1,145 sq km (19th largest district out of 25 districts in Sabah)

Territorial waters:

5856 sq km (3rd largest sea area in Sabah)

Coastline: 545 km

Coral Reef coverage:

670 sq km (highest concentration of reefs in Malaysia)

5 major geomorphological reef types: proto-atoll, offshore sea mount, fringing reefs, patch reefs , barrier reef formation)

Islands: 71 (18 inhabited)

Marine Parks:

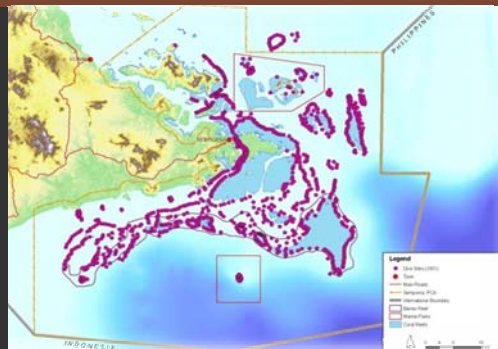
Tun Sakaran Marine Park and Sipadan





Why MSP is important for Semporna PCA

1. Semporna Shark Sanctuary by Local NGO
2. Propose Turtle flag Ship area, NE islands (WWF)
3. 1001 diving sites (District Office and Dive operators, marketing branding)
4. Semporna Tourism Hub (Federal Government)
5. Main industry area for lobster and seaweed (Federal Government)
6. Traditional Fishing areas pilot project (UNDP and Department of Fishery)
7. Sipadan & Tun Sakaran Marine Park (Sabah Park)
8. Transportation line/Marine tourism path line
9. In determinant People / Non Malaysian people
10. Propose for a World Heritage area





A Tale of Two Winds

- The Highest Concentration of Malaysian Coral Reef found in the coastal area of Semporna, *Hoeksema, 2012*



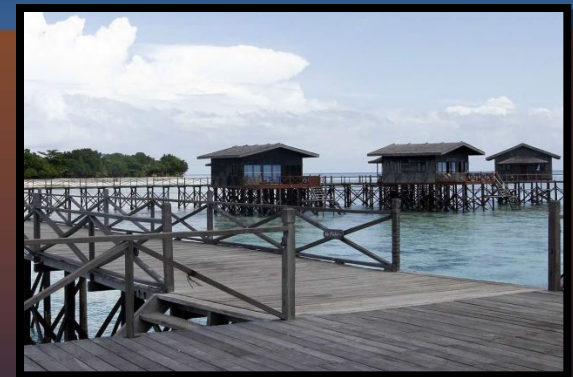
©Ferdinando Miscetti / Pom Pom Island Resort

A Dangerous District in Malaysia

- 24,000 undocumented residents lived in 18 illegal settlement (Represent 30% of the Population in the district), *Ibnu Ali Baba, 2013*

Whale Shark seen in Sitangkai, 2013

Killer Whale seen in Pompom island area, 2013



Intruders case, Febr'13, Killing & Kidnapping cases: Pompom, Singgamata, Lahad Datu, 2013 & 2014



MALAYSIA

The launch of the first Marine Spatial Planning in Sabah on 3 June marked a solid partnership between the Town and Regional Planning Department Sabah and WWF-Malaysia in committing to the Semporna Marine Spatial Planning process.



The Borneo Post
4 June 2015
Page 5

Malaysia's first Marine Spatial Plan in Semporna

By Murib Morpi

KOTA KINABALU: Sabah is set to mark another milestone in its continuous endeavour to better protect its rich biodiversity, having embarked on an effort to develop and implement the first ever Marine Spatial Plan (MSP) in Malaysia.

To be developed and carried out jointly with WWF-Malaysia, the MSP is a forward looking plan to guide coastal development and marine activities, with the ultimate aim of striking a balance between economic development and protecting the environment within certain areas.

The State Government, through the Town and Regional Planning Department (TRPD), yesterday officially inked its commitment by signing a Memorandum of Understanding (MoU) with WWF-Malaysia for developing the MSP, with Semporna being chosen as the pioneering district.

WWF-Malaysia Conservation Director Dr Sundari Ramakrishna said the MoU was for both parties to work together in charting out the MSP oceanographic techniques and other related technologies and resources.

"We will discuss what are the plans of the local government for coastal areas and the sea. So, we will have to work with the islanders, local communities, agencies at the district and state level," she said to media after the signing.

The signing was held as part of the official launching of Semporna MSP project, which was officiated by Permanent Secretary of the Local Government and Housing Ministry, Datuk Matus Sator, who also witnessed the signing together with Sulabayan member of parliament Datuk Jaujan Sambakong.



Town and Regional Planning Department director Murshidi Sapie (left) exchanging the MoU documents with Dr Sundari Ramakrishna, witnessed by Permanent Secretary of the Local Government and Housing Ministry, Datuk Matus Sator (second left) and Sulabayan assemblyman Dato' Jaujan Sambakong (second right) after the signing ceremony yesterday.

"We already have Sabah Structure Plan 2033, which will go to the Cabinet very soon. There is going to be a Semporna Local Plan. This plan must be aligned to the Semporna MSP. If you look at it (Sabah Structure Plan), it's about land use.

"But we should also look at what is happening in the marine sector... how many vessels are you allowing, how many licences, how many tour operators, can you build new resorts there? These things are not dealt with. Everyone has to come together to decide and explain what is going to happen.

"For example, many years down the road, if Petronas is asked to drill oil in Semporna, how far they can go. It is a very deep port, good for them, but we have to limit their activities. That means you don't take too much. But Spatial Plan is an integrated, dynamic plan that

can change within certain limits. So, it's adaptive," added Sundari.

Earlier in her welcoming speech, Sundari explained that MSP is an operational process to help ensure an integrated, ecosystem-based approach to planning, protection, management and sustainable use of marine areas and their resources.

Effective use of MSP, she said, was needed to address the current lack of coordination and integration of different sectors, level of governments and countries that today undermine the sustainable management of many marine areas.

"By promoting ecosystem-based integrated ocean management, WWF hopes to ensure that ocean use is managed in a manner that is integrated between sectors, countries and government levels, in a holistic

and adaptive manner," she said.

As to why Semporna was chosen, she said the area, particularly the Semporna Priority Conservation Area (SPCA) has the largest concentration of coral reefs in Malaysia.

The SPCA is also located within the Sulu-Sulawesi Marine Ecoregion (SSME), right at the apex of the Coral Triangle.

She said the MSP would provide an adaptive framework that is responsive to the uncertainties associated with complex, heterogeneous and dynamic systems.

As it involves multi-sectoral collaboration and partnership, the MSP will be an effective tool for resolving resource use conflicts as well as facilitating progress of multi-sectoral development.

Moving forward, she said WWF would like to see MSP adopted in other areas of conservation in Sabah and Malaysia in general.

Meanwhile, Jaujan in his speech, proposed TRPD to work with WWF to set up a research and educational centre in Semporna, for conducting related studies and promoting awareness on various local marine life and their importance to the ecosystem as well as the role they could play in economic development of the local communities.

He said the centre could serve as a base for planning and implementing educative programmes for young children, especially those at islands within SPCA, apart from catering for university students and experts to conduct related research on marine biodiversity.

Signing the MoU for TRPD was its director, Murshidi HJ Sapie.



LESSON LEARNED



- Learning process from Terrestrial Planning
- It's not an instant process, it may varies from 1 site to others.
- Highly depend on the decision maker & their Political will
- If there is an issue related, will speed up the process.
- When too many of islands need to be managed, When too many disaster threatening, When it's over populated none of this plan is perfect.
- There's always a room to improve





THANK YOU



www.panda.org
msumampouw@wwf.org.my