

Coral Triangle Marine Protected Areas System (CTMPAS) Framework

Workshop 1.3: Coastal and Ocean Governance in the Seas of East Asia: from Nation to Region

East Asia Seas Congress 2015

Danang City, Vietnam • November 18-19, 2015



**CORAL TRIANGLE
INITIATIVE**

ON ENVIRONMENTAL, ECONOMIC AND SOCIAL SUSTAINABILITY

Outline

- I. The Coral Triangle Initiative
- II. CTMPAS Framework
 - A. Rationale
 - B. Design and Strategies
 - C. Updates
 - D. Next Steps

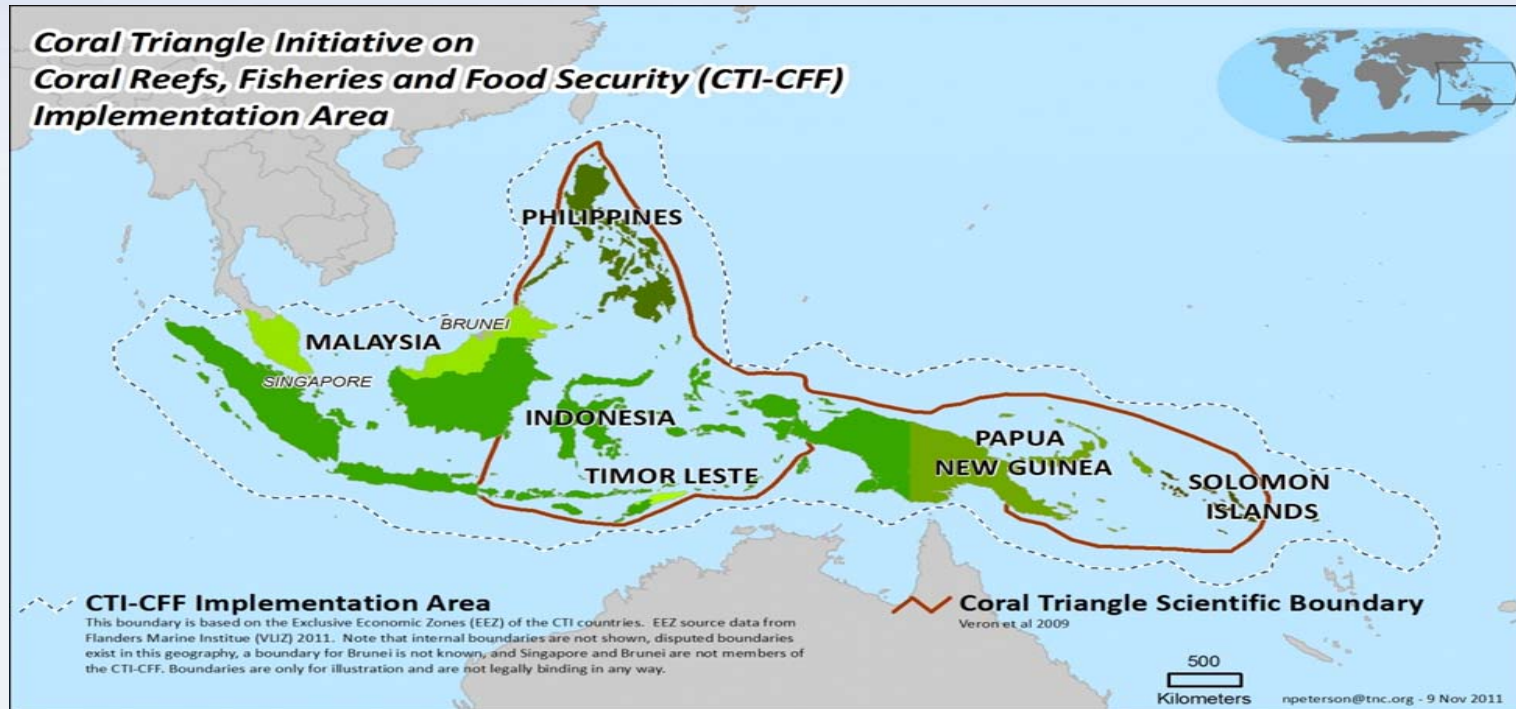


CORAL TRIANGLE
INITIATIVE

ON CLIMATE RESILIENCE, OCEAN RESOURCES AND COASTAL RESILIENCE

THE CORAL TRIANGLE INITIATIVE

on Coral Reefs, Fisheries and Food Security



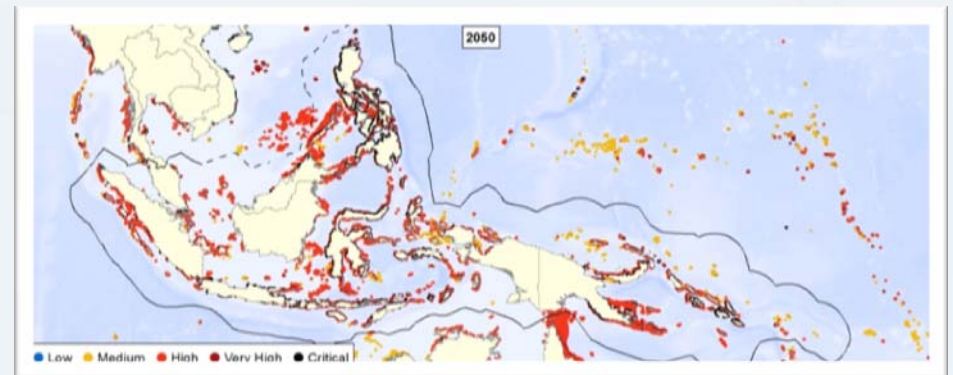
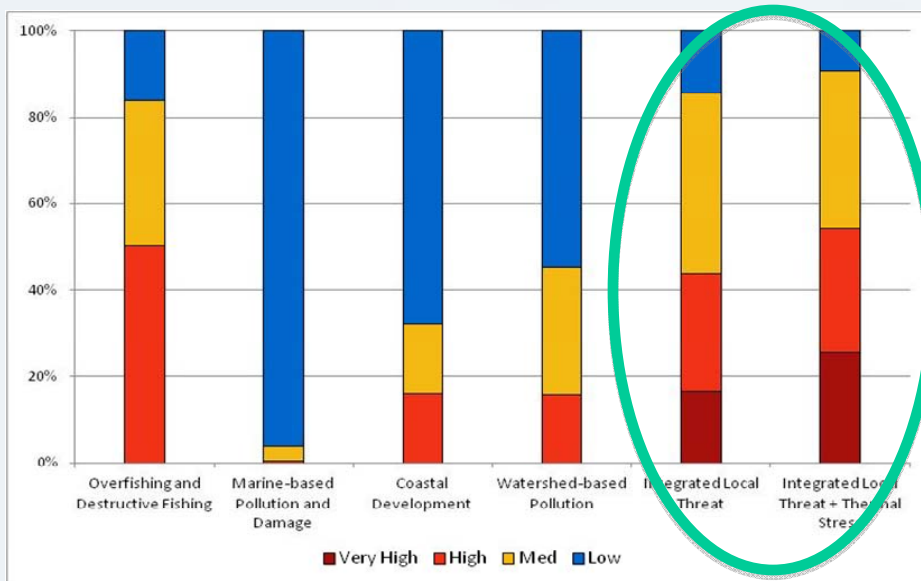
- Multilateral partnership to address urgent threats to coastal and marine resources
- 10-year plan and considers laws and policies of the CT6

CTMPAS Framework: Rationale

Reefs at Risk Revisited in the Coral Triangle

Maurice Knight, Laretta Burke, Katie Reytar, Alan White

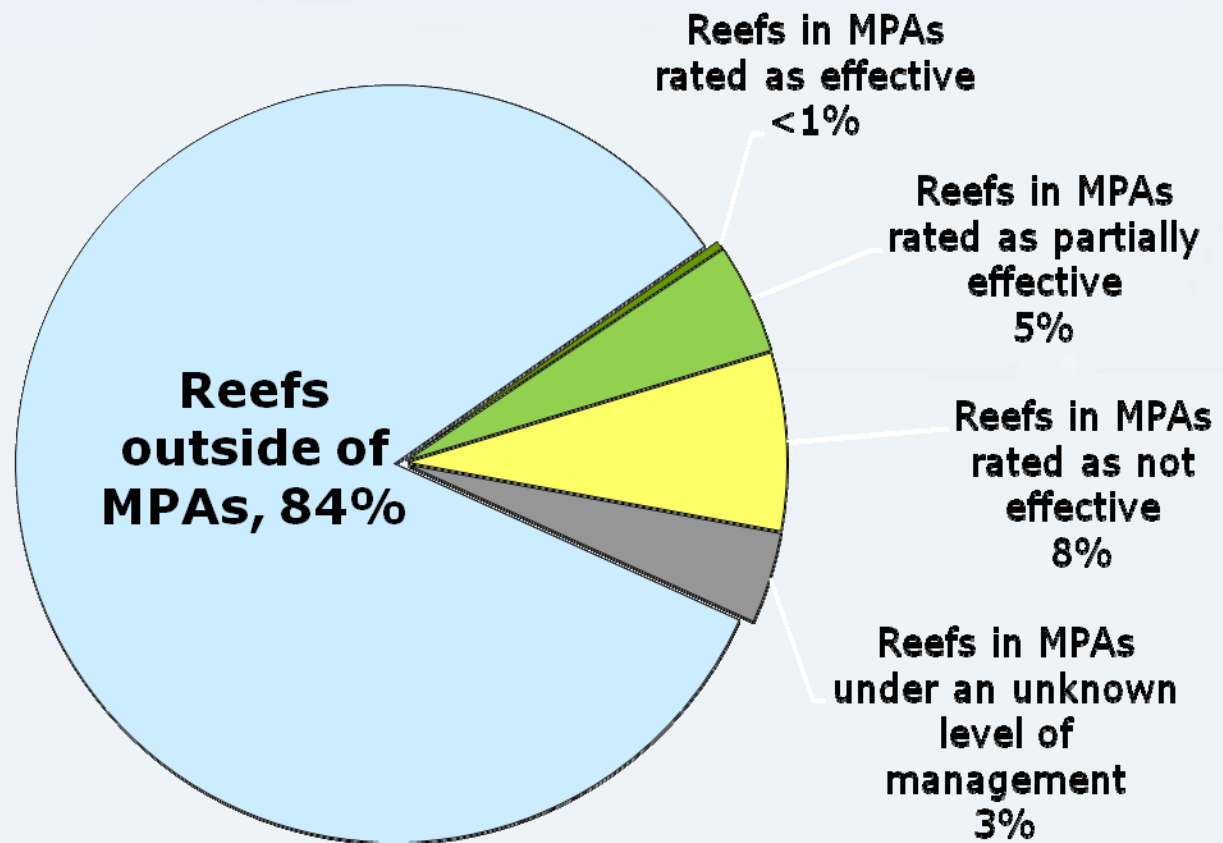
ICRS, July 2012



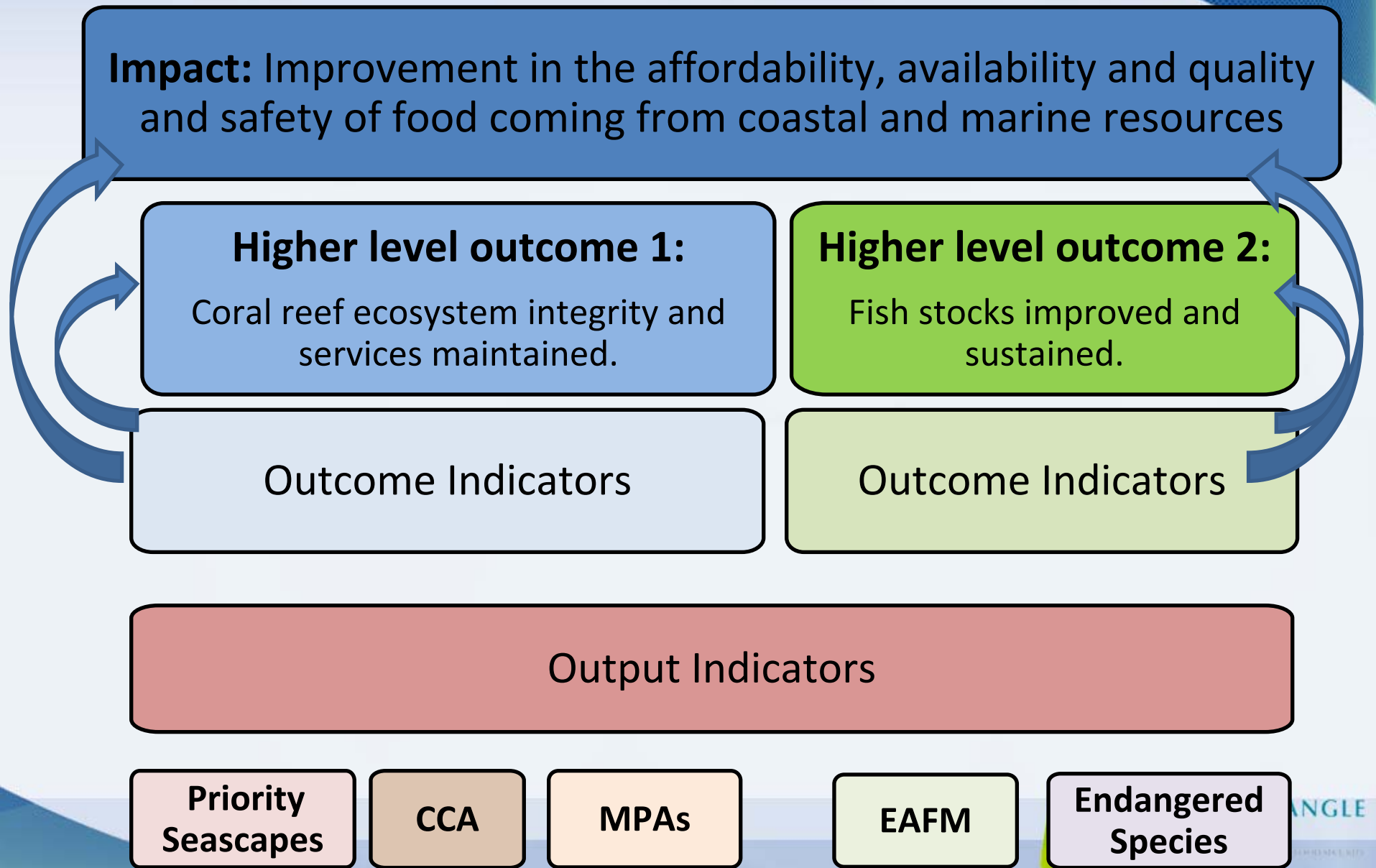
**CORAL TRIANGLE
INITIATIVE**
ON CORAL REEF ECOSYSTEMS AND SOCIOMANAGEMENT

CTMPAS Framework: Rationale

Why we need the CTMPAS: MPA coverage of coral reefs and the relative effectiveness of MPA in the Coral Triangle



CTI-CFF Regional Plan of Action M&E Framework



CTI Regional Plan of Action MPA Goal 3

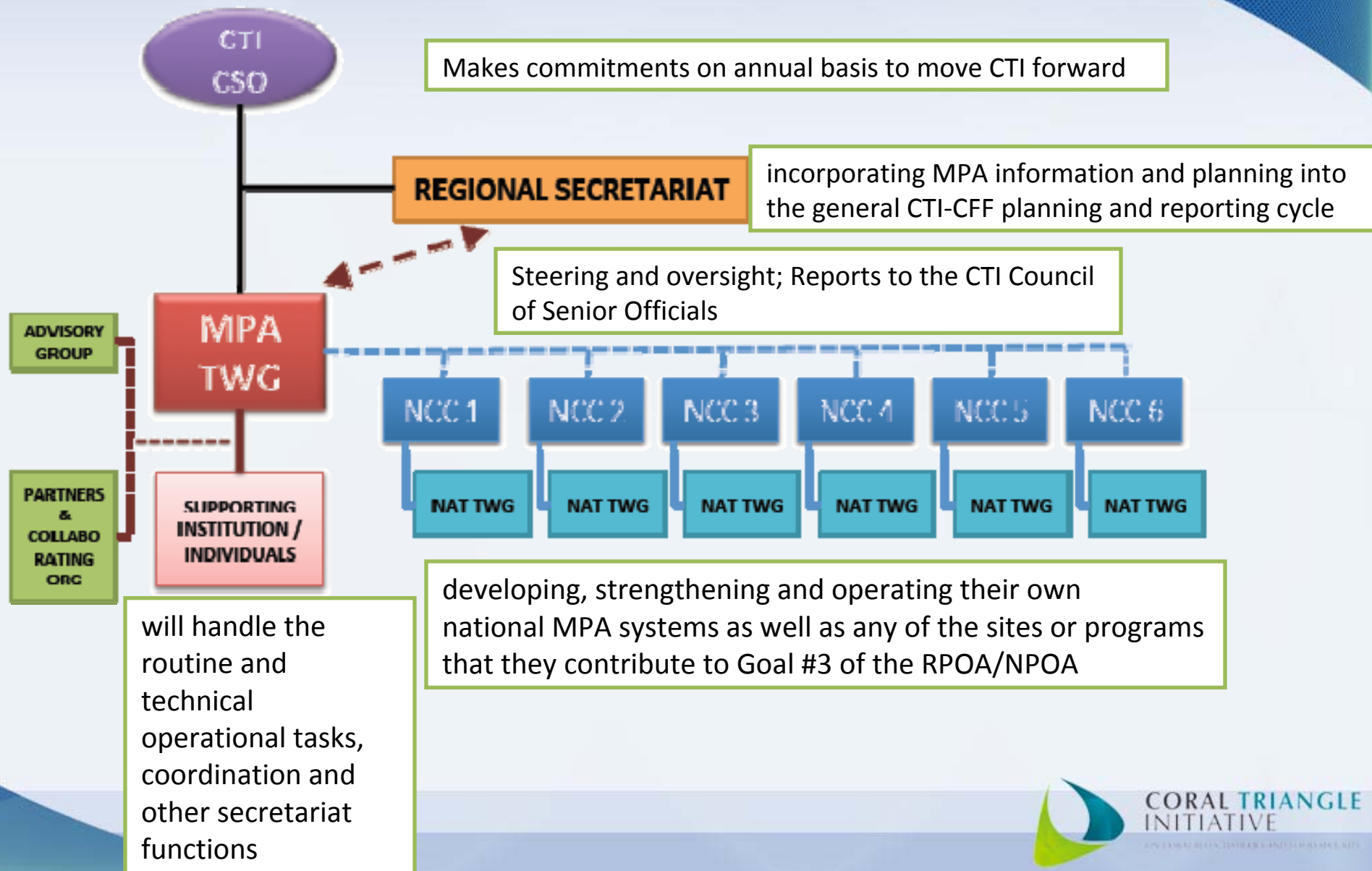
Target and Indicators...

By 2020: *“Region-wide Coral Triangle-MPA-System (CTMPAS) in place and fully functional”*

- | |
|---|
| 1. CTMPAS Framework developed and adopted by CT6 |
| 2. Percent/area of total marine habitat area in CT region in marine protected or managed areas |
| 3. Percent/area of each major marine and coastal habitat type in protected “no-take replenishment zones” |
| 4. Percent/Area of MPAs under “effective” management |
| 5. Percent/Area of MPAs included in CTMPAS |

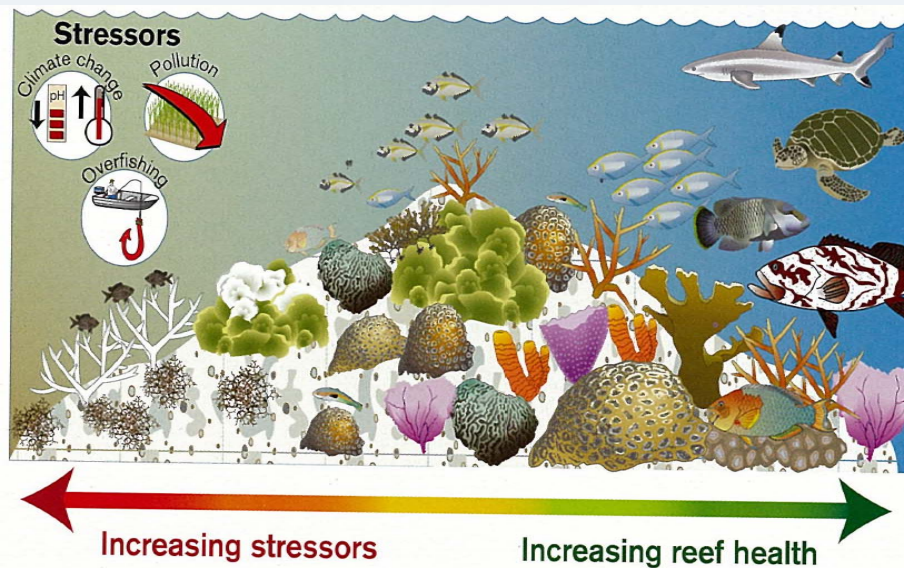


CTI MPA Technical Working Group



CTMPAS Framework: Rationale

MPAs are critical to healthy oceans and reefs
(fisheries, income, biodiversity, resilience)

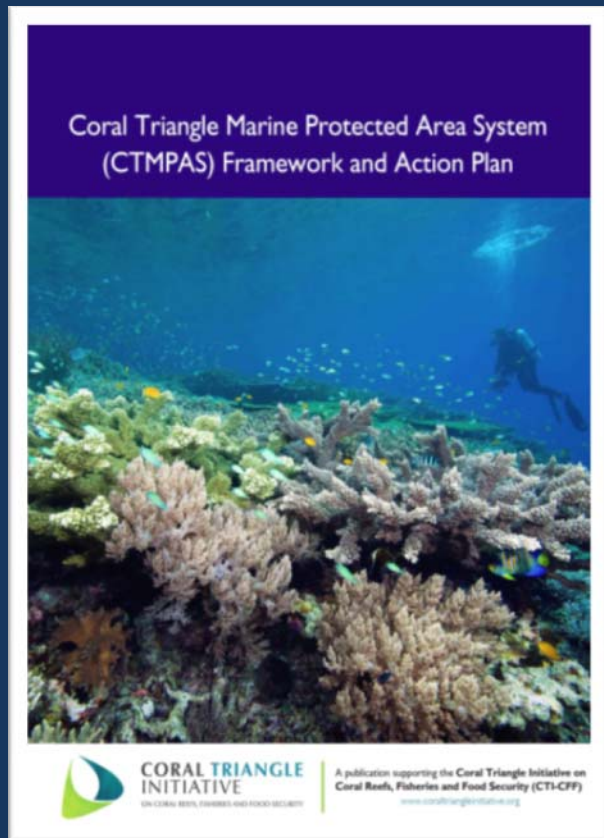


3 Inter-related Functions and Benefits of MPA Networks:

- ✓ **ECOLOGICAL:** *a network can help maintain functional marine ecosystems by encompassing the temporal and spatial scales of ecological systems.*
- ✓ **SOCIAL:** *a network can help resolve and manage conflicts in the use of natural resources.*
- ✓ **GOVERNANCE:** *a network can help facilitate the efficient use and management of resources.*

Credit: Conservation International

CTMPAS Vision



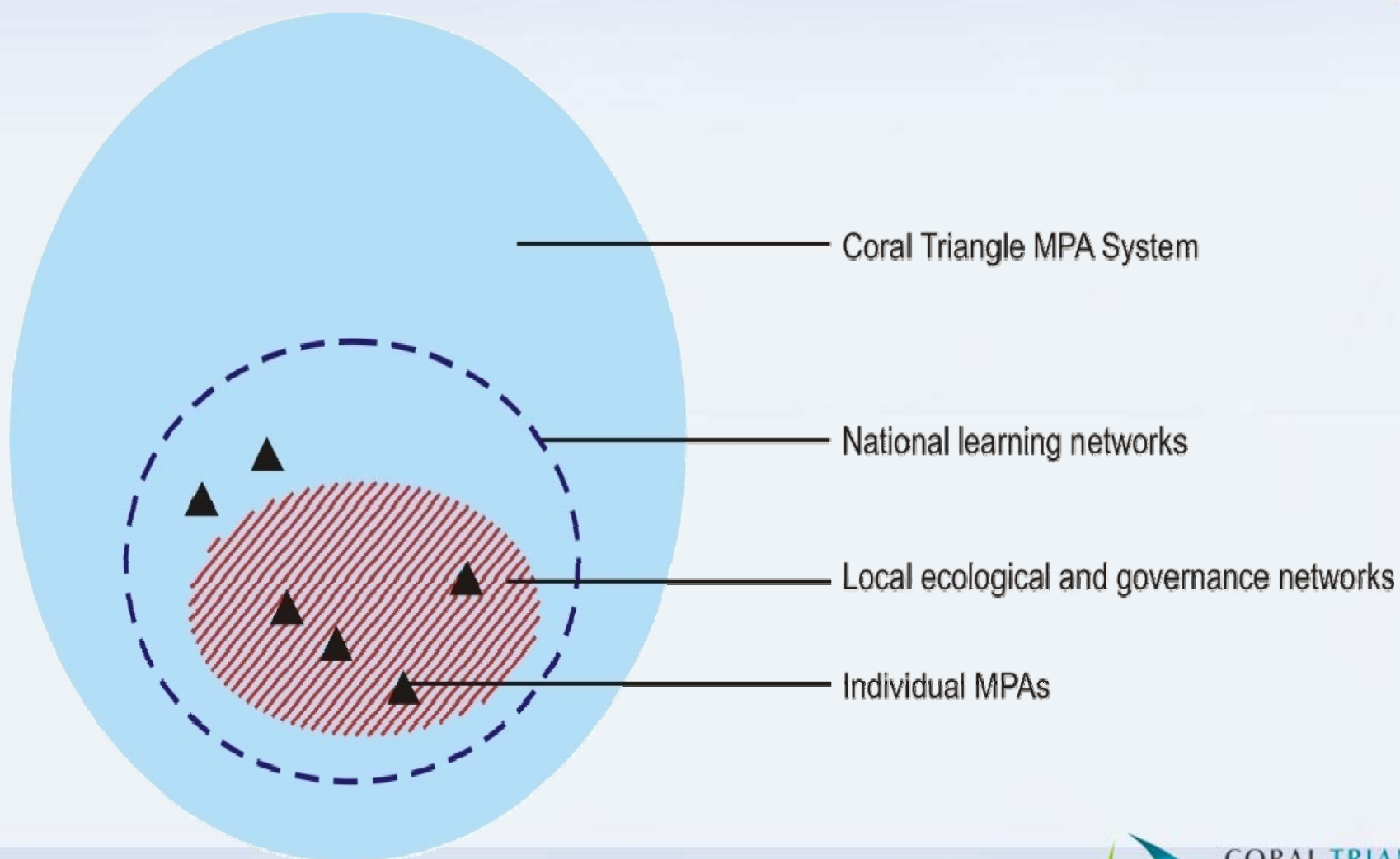
“a system of prioritized individual MPAs and networks of MPAs that are connected, resilient, and sustainably financed, and are designed in ways that generate significant income, livelihoods, and food security benefits for coastal communities; and conserve the region’s rich biological diversity.”

CTMPAS Steps to 2020



CORAL TRIANGLE
INITIATIVE
ON ENVIRONMENT, TOURISM AND SOCIETY

Coral Triangle MPA System Basic Design— A Nested System



**CORAL TRIANGLE
INITIATIVE**

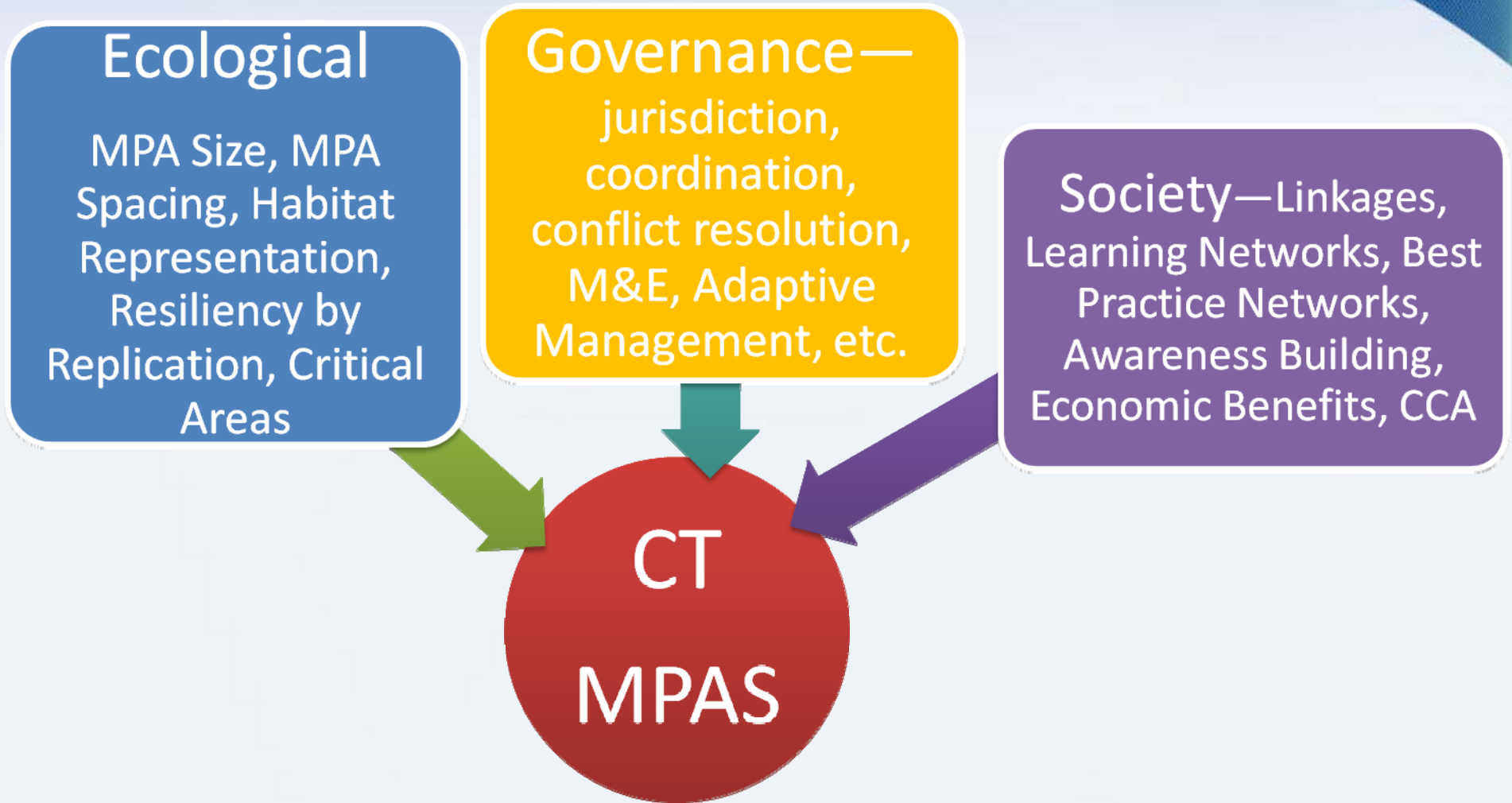
ON ENVIRONMENT, DEVELOPMENT AND SOCIETY

Framework: Principles

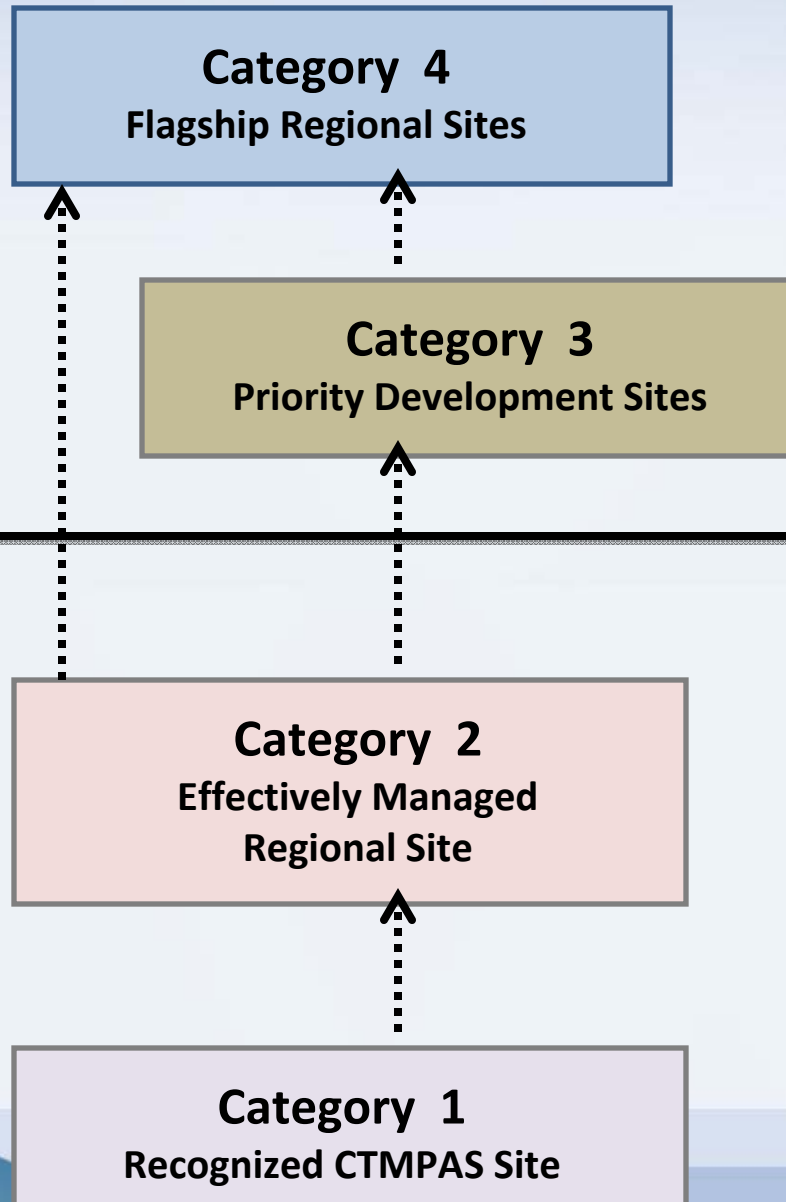
1. All programs and activities adhere to the principles stated in the CTI-CFF Regional Plan of Action.
2. **Be inclusive:** Include a wide spectrum of partners and stakeholders; all sites in CT Atlas in the CTMPAS
3. **Integration:** Seascapes, fisheries, climate change adaptation, as well as threatened species in all aspects of MPA selection, networks and management
4. **Aim for social equity:** In all interactions, sharing of costs and benefits among stakeholders, respecting culture and indigenous heritage of stakeholders
5. **Acknowledge and respect national processes:** Recruiting sites and actions, or reporting



CTMPAS Components



CTMPAS Categories



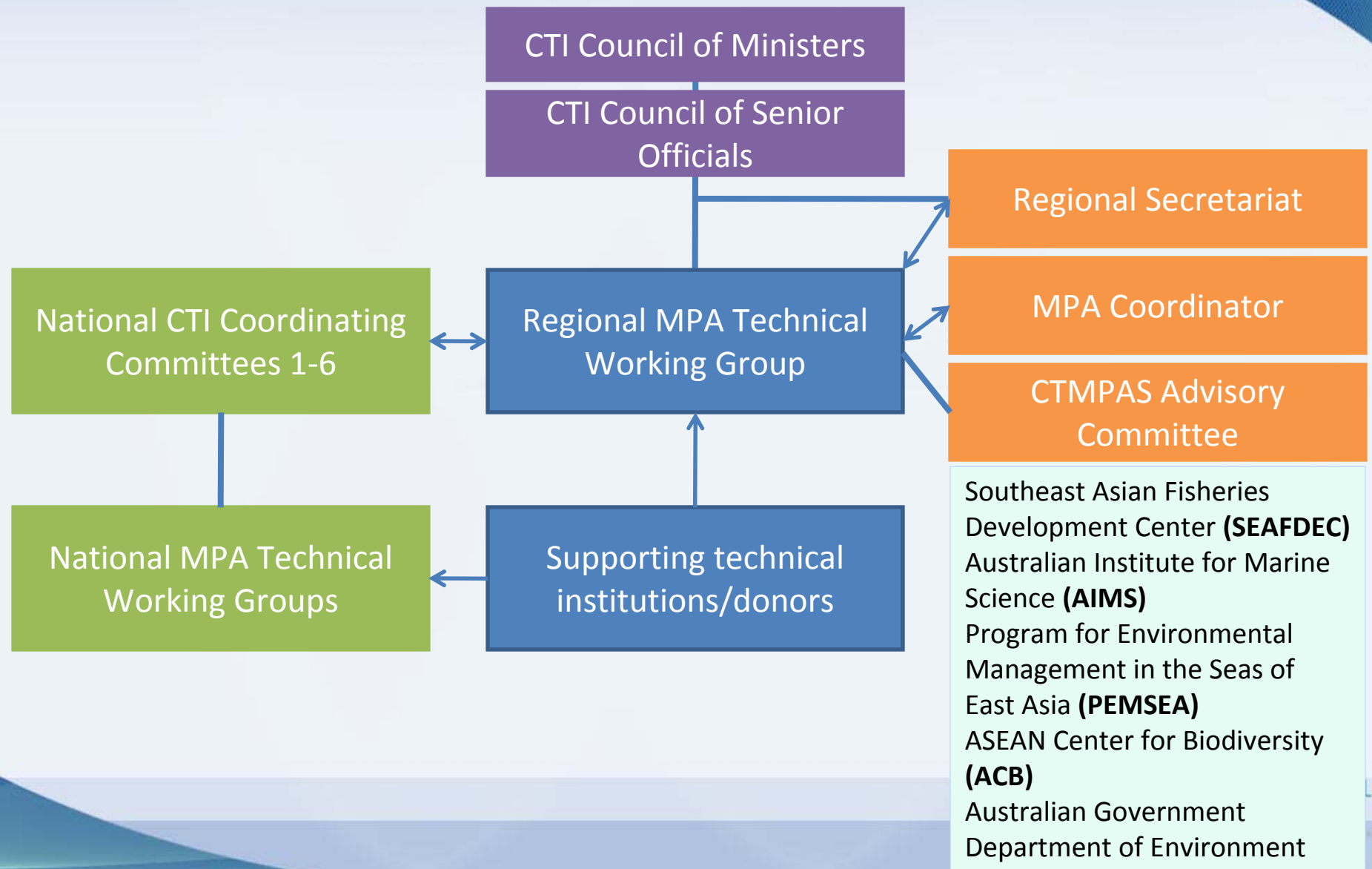
Nominations for Categories 3 and 4 go through a regional-level process conducted by a Regional Advisory Group. Regional MPA TWG has the final decision on which sites will be accepted into CTMPAS under Categories 3 and 4.

REGIONAL-LEVEL REVIEW AND SELECTION

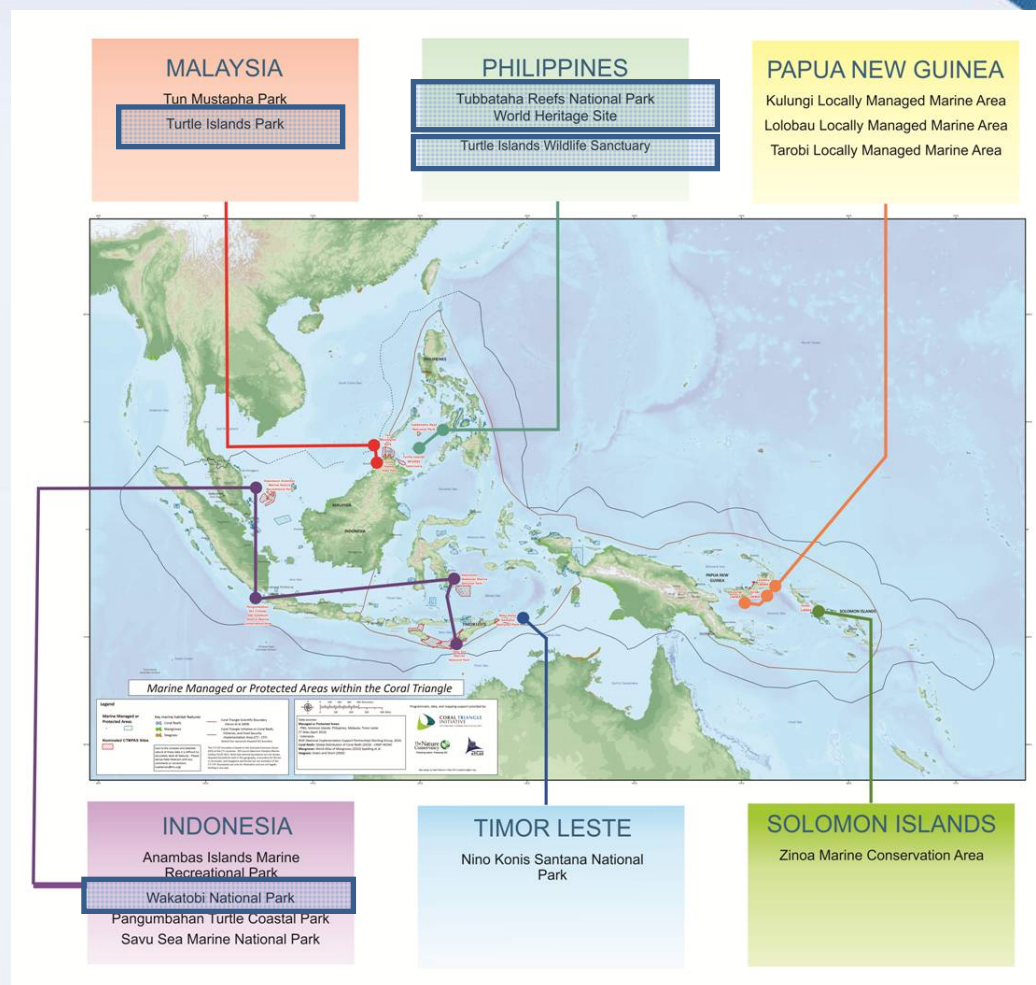
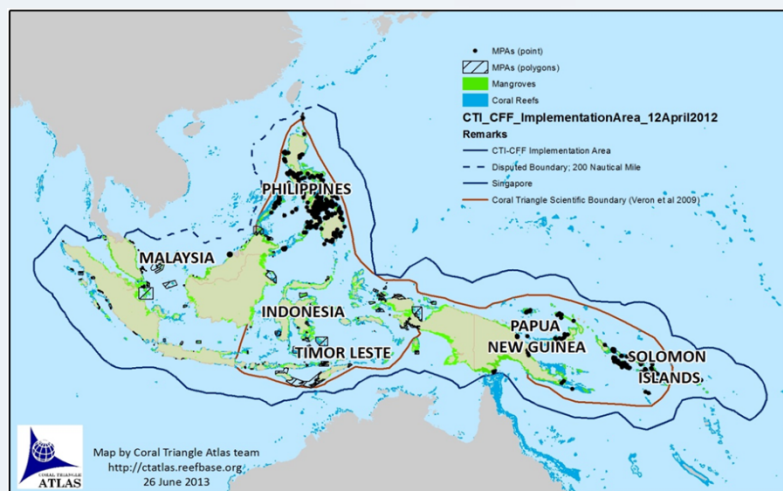
COUNTRY-LEVEL REVIEW AND SELECTION

Nominations for Categories 1 and 2 are reviewed solely in-country by the NCC or its designated body, using the MPA assessment tool in place in the country. NCC will decide if a site meets National and Regional criteria for Category 1 or 2, and the CTMPAS TWG will respect the NCC evaluation and accept the recommendation.

CTMPAS Coordination and Organizational Structure



Coral Triangle Atlas and the CTMPAS Category 4 MPAs



Progress towards CTI MPA Indicators...

Indicator	Target	Status of Target
1. CTMPAS Framework	Adopted/Launched 2013/14	Completed
2. Percent of total marine habitat in MPA/LMMA	20%	17.8% of reef habitat 9.4% territorial waters 1.6% of EEZ
3. Percent of each habitat in “no-take” area	10%	Approx 2%
4. Percent of MPAs under “effective” management	25% applying criteria in CTMPAS	Approx 1%
5. Percent of MPAs included in CTMPAS	All MPAs to be included by 2020	
Category 1	100%	Approx 80-90%
Categories 2, 3 & 4	TBD	TBD



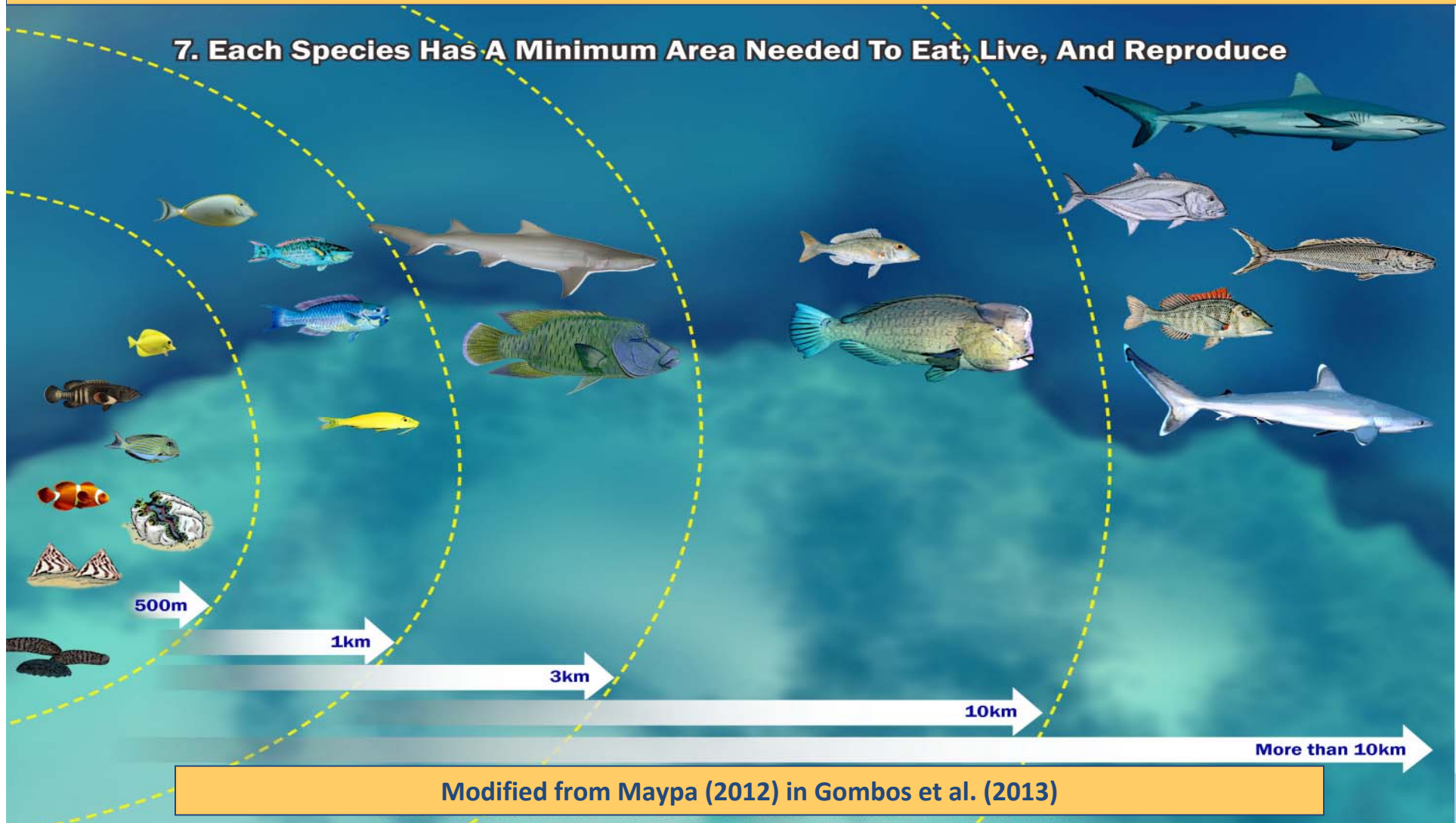
**CORAL TRIANGLE
INITIATIVE**

ON ENVIRONMENT, DEVELOPMENT AND SOCIETY

Research helping improve design of MPAs in Coral Triangle: Larval dispersal and movement patterns of coral reef fishes, and implications for marine reserve network design

Adult and juvenile movement patterns of coral reef and coastal pelagic fishes

7. Each Species Has A Minimum Area Needed To Eat, Live, And Reproduce



Thank You!



**CORAL TRIANGLE
INITIATIVE**

ON ENVIRONMENTAL, SOCIAL AND GOVERNANCE