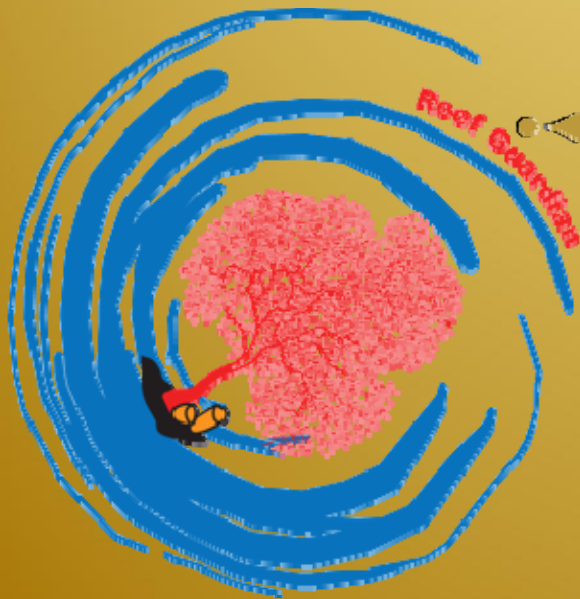
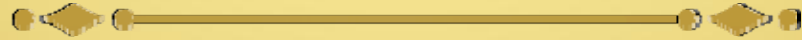


The win-win partnership: Privately managed Sugud Islands Marine Conservation Area

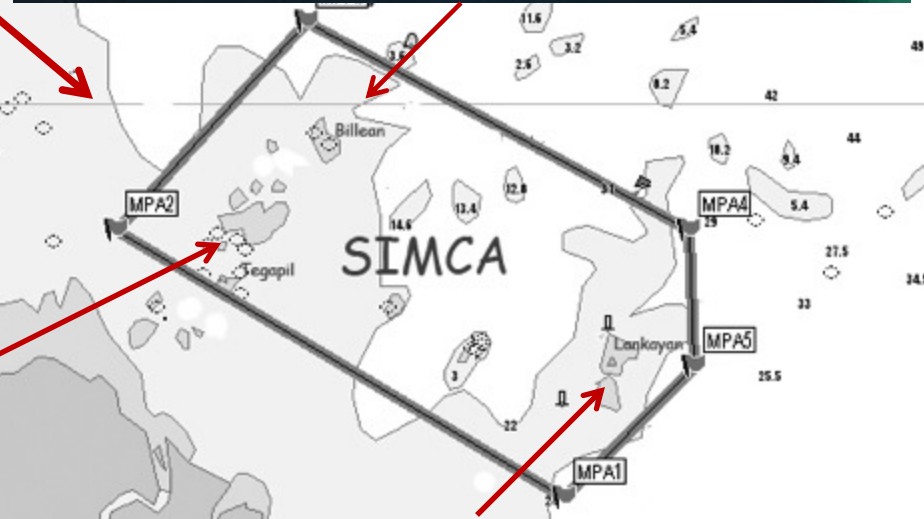
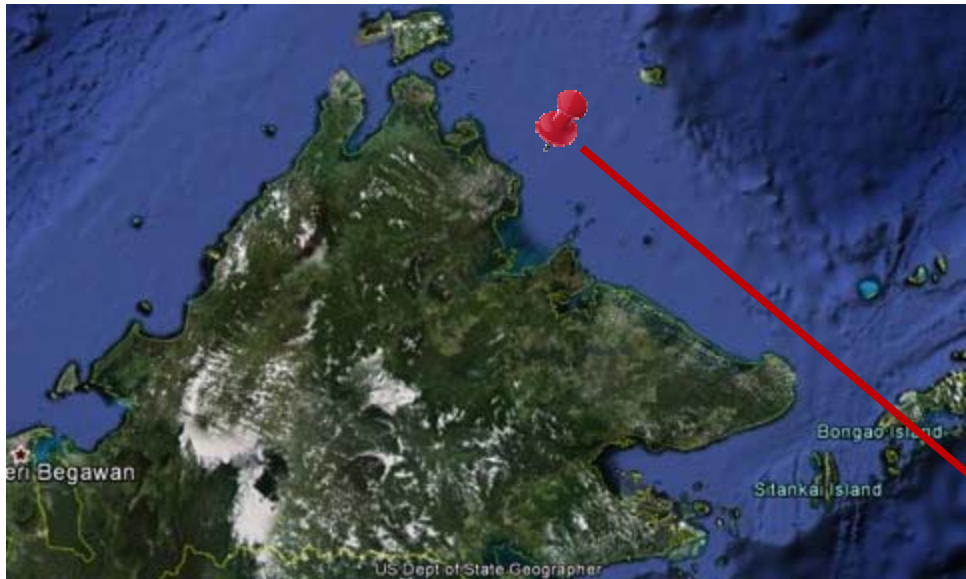


Achier Chung, PhD
Reef Guardian Sdn Bhd

Outline



- ✦ Background of SIMCA and Reef Guardian
- ✦ The relationship
- ✦ Investment in enforcement capacity
- ✦ Investment in environmental control
- ✦ Summary

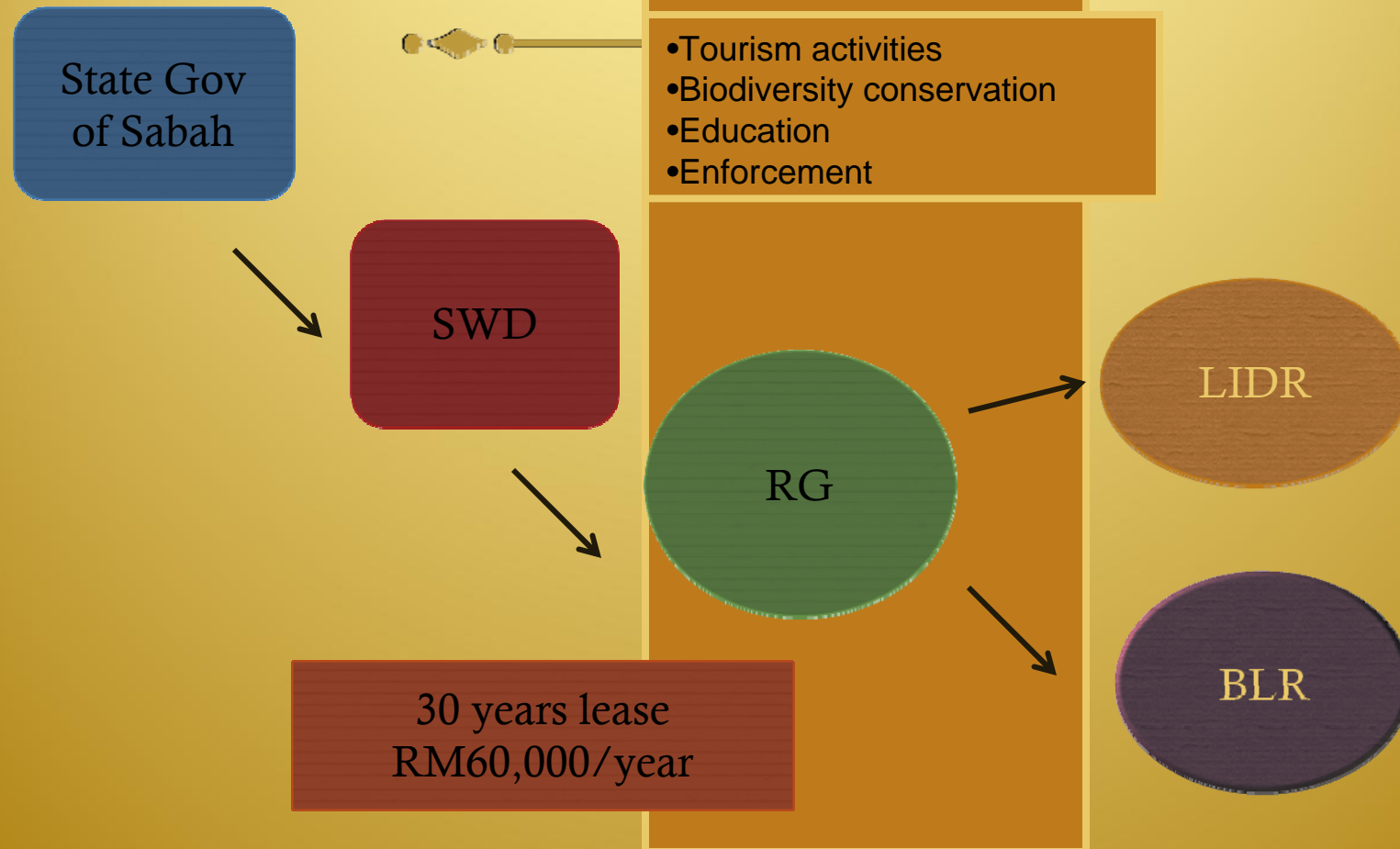


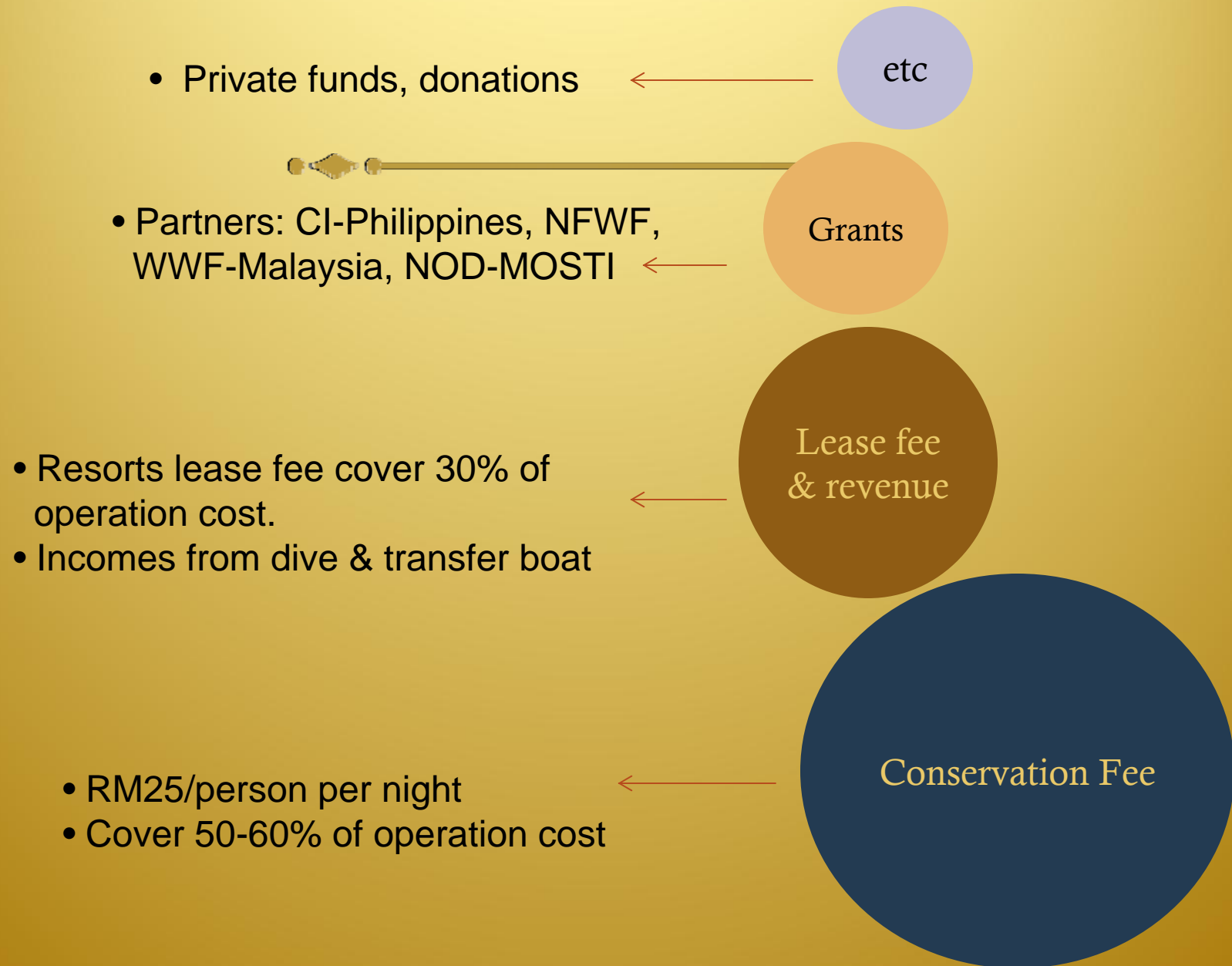
Sugud Islands Marine Conservation Area (SIMCA)

- ✦ Established in Dec 3, 2001
- ✦ First private managed MPA
- ✦ No island communities
- ✦ Biologically diverse
- ✦ One island, one resort
- ✦ Maximum capacity

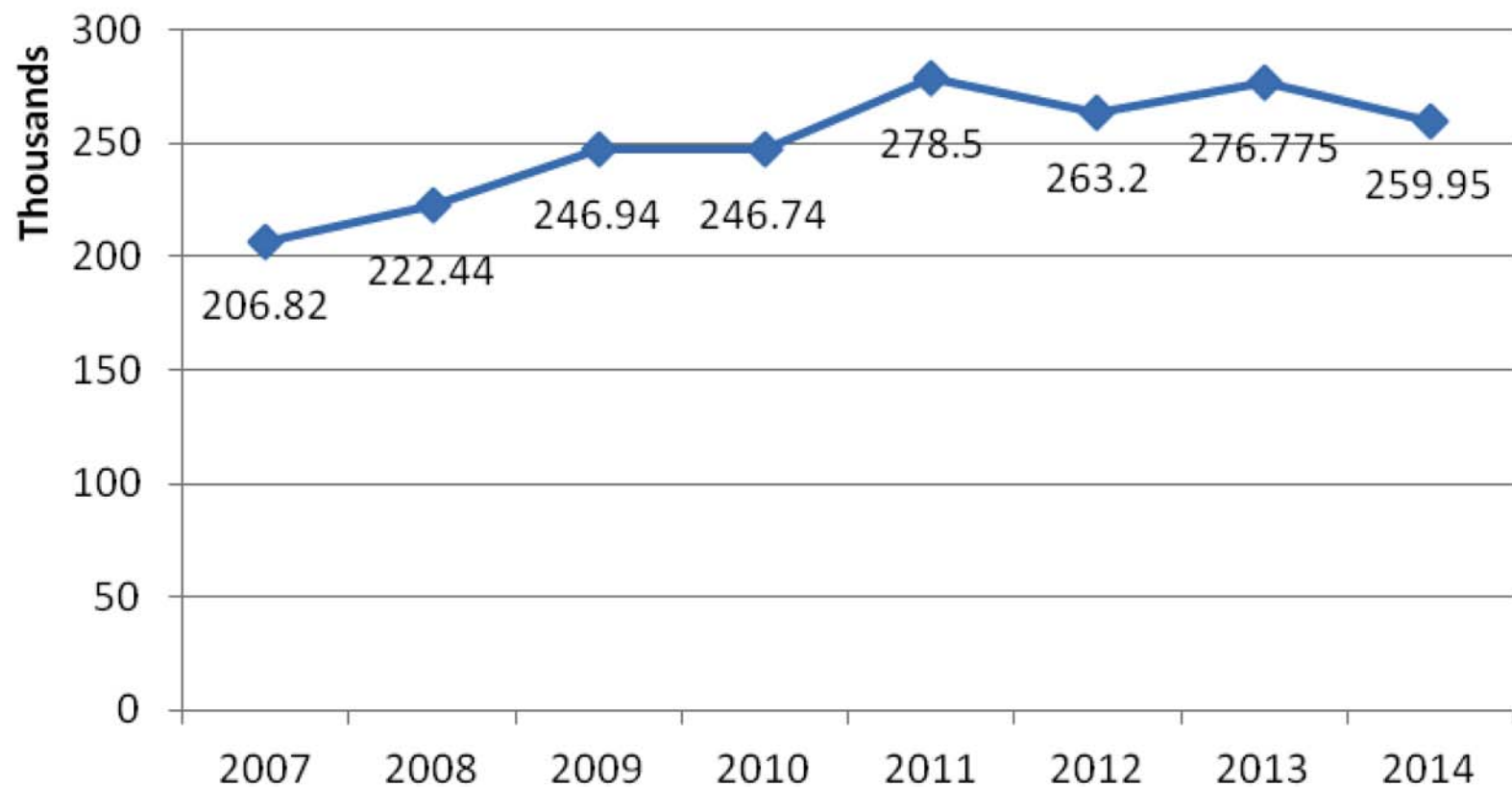
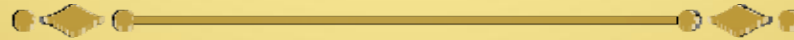


The Relationship



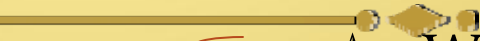


Revenue from conservation fee (in RM)





Run operation



- ✦ Wages
- ✦ Infrastructures
- ✦ Equipments
- ✦ Utilities
- ✦ Fuels

Operation cost: RM350,000 – RM500,000 / year

Symbiosis relationship



Resorts

- Bring in tourists → conservation fee
- Resorts lease fee
- Provide foods, facilities, manpower and etc

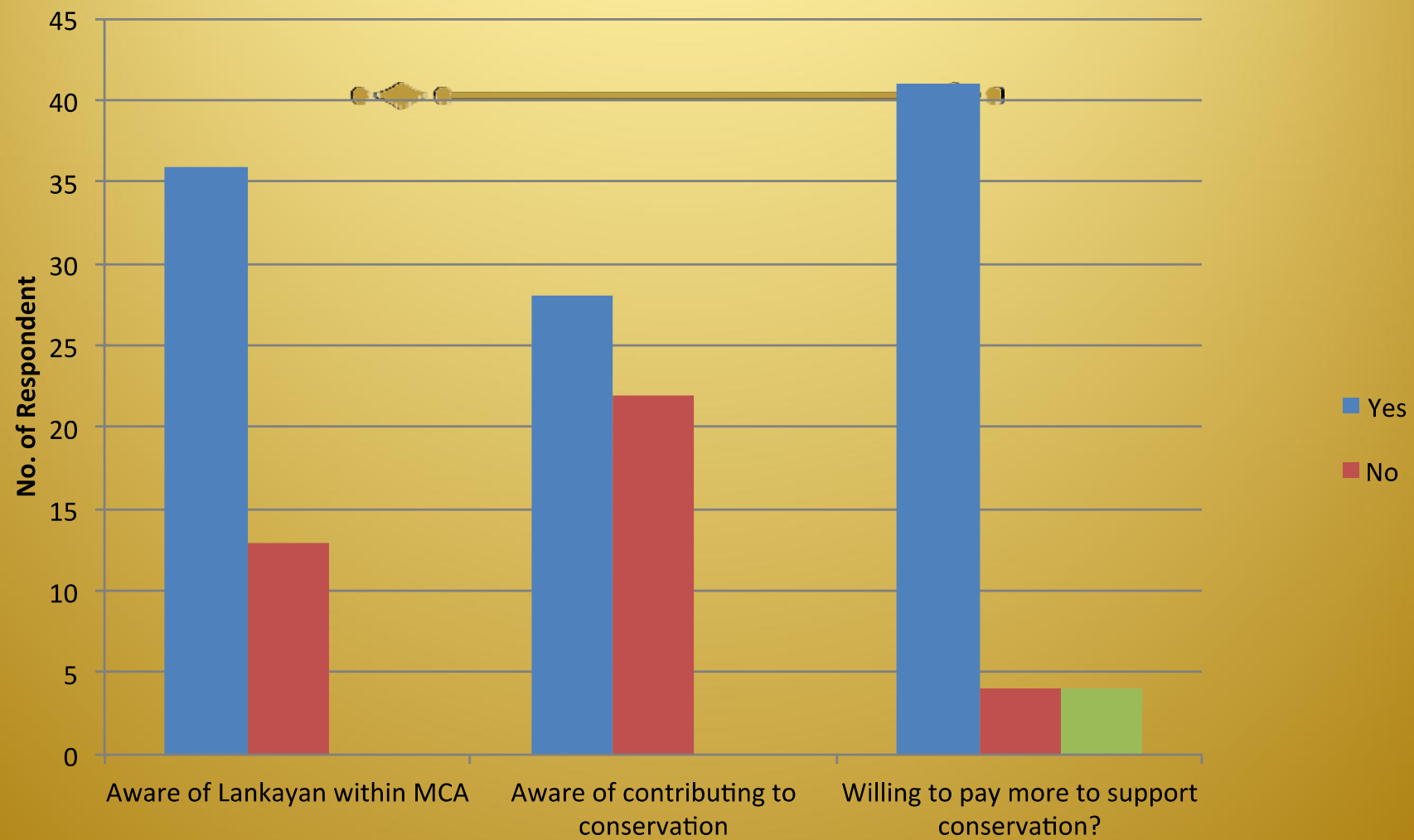
Reef Guardian

- Protect the reefs and the diversity for tourist enjoyment
- Control activities within reserve
- Keep environmental-friendly protocol

(1=not at all important to 5=extremely important)

Environmental Attributes	Contribution to choice of destination
Marine wildlife	
a. Coral health, cover and diversity	4.12 ± 0.87
a. Fish diversity and abundance	4.12 ± 0.80
a. Presence of sea turtle	3.92 ± 1.01
a. Presence of exotic species	3.58 ± 1.13
Terrestrial Features	
a. Bird diversity	2.57 ± 1.17
a. Landscape attractiveness	3.92 ± 0.90
a. Beach size	2.92 ± 0.90
a. Beach cleanliness	4.34 ± 0.72
a. Sand quality	3.60 ± 1.03
Weather and Sea Condition	
a. Water clarity	4.30 ± 0.76
a. Air temperature	3.58 ± 0.93
Anthropogenic Factors	
a. Landscape alteration	-
a. Sound Pollution	-
a. Low number of tourists	3.84 ± 0.77
a. Environmental friendliness	
• Sewage treatment	3.98 ± 0.91
• Garbage disposal	4.12 ± 0.85

Statement/Question	Yes	No	Don't know
Presence of sharks and sea turtles indicate the existence of a healthy coral reef .	41	4	5
Presence and abundance of many kinds of fishes are strongly related to the health and condition of the coral reefs .	46	1	2
Presence of excessive lights from island will cause baby turtles to lose their way to the sea.	35	4	10
Would you agree on banning marine fish feeding practices in marine parks/marine conservation area?	43	2	4



Investment in Enforcement capacity

- ▶ Capacity
 - ▶ 11 trained and certified Honorary Wildlife Warden.
 - ▶ Three patrol boats
 - ▶ Patrol schedule – ah hoc, based on radar information.
- ▶ Radar tracking system
 - ▶ Almost 18 hours operation
 - ▶ Every 30 min record of data – boat in and out and surrounding SIMCA.
 - ▶ Also serve for security purposes – joint monitor with Army and Police.



Radar tracking system



Achievements since 2005

2005

Jan 3 2005, one compressor fishing boat was detained 4km north Lankayan Island. Illegal fishing gears such as fish spears found in the boat. Boat and crew were hand over to **Police Beluran** for further action.



Dead fishes from fish bomb



Reef destruction from fish bombing



2006

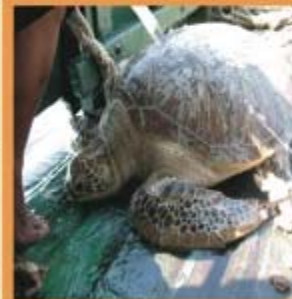
15 Sept 2006, one fish bombing boat was detected 6km north of Lankayan Island. Boat was detained with **Marine Police**. Fish bomb found on boat and boat was prosecuted.



detonator untuk bom ikan

1 Nov 2006, 2 fish bombing boats detained 5km north of Lankayan Island. Dead fishes and fish bomb found on boat. Boat prosecuted.

14 Dec 2006, one fish trawler was detained on trapping a green turtle in their fishing net. The green turtle was released near Lankayan Island.



2007

18 Feb 2007, one compressor fishing boat was caught fishing with sodium cyanide at north of Pulau Lankayan. Lives fishes, sodium cyanide and fish spear were confiscated. Boat and crews were handle over to **Marine Police Sandakan** for prosecution.



Fish spear, home-made fis, sodium cyanide



2008

11 April 2008, six fishermen were caught fishing live fishes with sodium cyanide at Billean Island. The fishermen were hand-over to **Police Beluran** for further action.



4 Oct 2008, one fish bombing boat was detained 6km south of Lankayan Island. Dead bombed fishes and fertilizer for making fish bomb were found in the boat. Boat and crews were prosecuted with help from **Malaysia Maritime Enforcement Agency (MMEA)**.

2009

28 Feb 2009, three fish bombing boats detained 6 km north of Lankayan Island. Boat and crews were hand-over to **Police Beluran** for further action.



Vietnamese boat that enter SIMCA at night

14 Nov 2009, one Vietnamese boat deployed 7km bottom gill net inside SIMCA at 9:30pm. Boat contents at least 50 leopard sharks and other species of sharks. Boat and crews were handover to **Malaysia Maritime Enforcement Agency (MMEA)**. However this boat was release 2 days later with reason not enough evidents to place charges.

2010

2 Sept 2010, one compressor fishing boat was detained at north of Lankayan Island. This boat suspected carried out fish bombing and sodium cyanide. Boat and crews were handover to **Police Beluran** for further action.

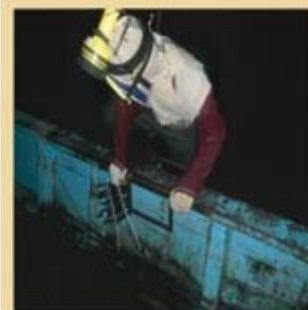


Compressor hose that use by fishermen.

26 Nov 2010, one compressor boat detained at north of Lankayan Island. However no illegal fishing materials or gears found in the boat. Captain and owner of the fishing boat were given strict warnings.

2011

25 May 2011, one compressor boat was detained with assistance from **MMEA**. Nearly 400g of solid sodium cyanide and 700ml dilute solution were found in the boat.



Fishing crew from compressor fishing boat

8 Aug 2011, one compressor boat detained at the north of Lankayan suspect on carried out sodium cyanide fishing. However boat and crews were released after no evidents found.

2012

Two sodium cyanide / compressor fishing were detained and arrested on 11 Feb 2012 and 14 Feb 2012. Boat and fishing crews were handed over to **PGA** for further action.



On 29 June 2012, one fish trawler was detained from trawling 5.7 nm west of Lankayan Island. One fishing crew found without proper document and identification. Boat and crews were handed over to **PGA** for further action.



2013

On 23 Nov 2013, one fish trawler was detained together with **PGA**. The trawler was fishing at 7 nm west Lankayan Island. However, boat and fishing crews were released.



On 20 Sept 2013, there were 27 pumpboats fishing at the north of Lankayan Island. Reef Guardian managed to detain only 3 pumpboats. The origin of pumpboats were from Palawan Philippine. Boats and crews were released without police report.



2014

On 16 Feb 2014, one fish trawler was trawling at 3.6 nm south of Lankayan Island. Boat and crews were detained. However, no police report was filed. Boat and crews were released after verbal warning.

On 26 April 2014, one compressor fishing boat was arrested at 7 nm north west of Lankayan Island. Boat and crews were handed over to **PGA** for investigation. However, no police report was filed because of no illegal substances found in the boat.

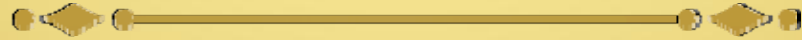


On 9 July 2014, Reef Guardian failed to stop a fish trawler that trawled at 3.2 nm north Billeen Island. Fish trawler refused to stop for inspection.

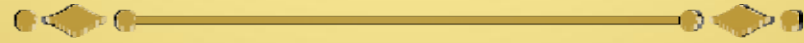
Investment in environmental control



Summary



- ✦ SIMCA – 1st private managed MPA without rely on government funds but rather provide revenue to the Government.
- ✦ Tourism opportunity for sustainable funding for MPAs
- ✦ Healthy marine ecosystem to support long-term eco-tourism activity.
- ✦ Conservation, eco-friendly does bring up resort's status/profile!



Thank you