



# Philippine Rural Development Project (PRDP)



**Seaweeds Farming in Guimaras  
Province, Philippines**

# What is the PRDP?

PRDP is a six-year (2014-2020) project designed to establish the government platform for a modern, climate-smart and market-oriented agri-fishery sector.

PRDP will partner with the LGUs and the private sector in providing key infrastructure, facilities, technology, and information that will raise incomes, productivity, and competitiveness in the countryside.

*PRDP aims to increase household income of beneficiary farmers and fisherfolk of at least 5% per year*



# Towards Inclusive Growth thru Broad-based Rural Agro-Industrial Development

3



## COMMERCIAL SMALLHOLDERS – FULL MARKET INTEGRATION

- Create efficient markets and value chains
- Address over-regulation and other distortions in markets, reduce transaction costs
- Support regulatory and agribusiness reform

2



## SMALLHOLDERS IN TRANSITION – FARMS TO MARKET LINKS

- Diversification into high-value activities
- Linkages to value chains
- Rural non-farm enterprises for income boost
- Risk management to withstand shocks

1



## SUBSISTENCE FARMERS AND MARGINAL FISHERS – FOOD SECURITY AND MARKETABLE SURPLUS

- Increase productivity, reducing vulnerability
- Improving services
- Diversify livelihood support

# Cost Estimates and Financing (P million)

Component	Loan Proceeds	Grant	National Government	LGU	Total	% (Total Program Cost)
Infrastructure	14,830.01	-	1,853.75	1,853.75	18,537.51	67.32
Enterprise	4,100.00	229.60	1,332.50	1,264.44	6,926.54	25.15
Program Support	984.00	-	246.00	-	1,230.00	4.47
Local Planning	586.00	57.40	146.50	-	789.90	2.87
<b>Total Base Cost</b>	<b>20,500.01</b>	<b>287.00</b>	<b>3,578.75</b>	<b>3,118.19</b>	<b>27,483.95</b>	
Front-End-Fee	51.38	-	-	-	51.38	0.19
<b>Total Program Cost</b>	<b>20,551.39</b>	<b>287.00</b>	<b>3,578.75</b>	<b>3,118.19</b>	<b>27,535.33</b>	<b>100.00</b>
<b>Financier Share</b>	<b>75%</b>	<b>1%</b>	<b>13%</b>	<b>11%</b>	<b>100%</b>	



# Province of Albay



**Geonets  
Manufacturing**

**Coconut Areas (has) :**

- 5,204.67

**Annual Production  
(kgs):**

- 6,245,604



**Concreting of  
Pistola -Tablon  
15.03 km Farm to  
Market Road**

**Libon Municipal  
Office**

**Oas Municipal Office**

Image © 2015 DigitalGlobe

© 2015 Google

Data SIO, NOAA, U.S. Navy, NGA, GEBCO

Image © 2015 CNES / Astrium

Imagery Date: 12/25/2014 13°17'07.95" N 123°26'41.36" E elev 17 m eye alt 29.72 km

Google earth



# Philippine Rural Development



# Geo-Tagging: An Innovative Tool to Enhance Transparency and Supervision of Development Projects



# Subproject supervision and monitoring





# Progress Monitoring

The screenshot displays a Google Earth interface with a road construction project. The main map shows a road alignment with stationing markers (0+800, 0+250, 0+200, 0+160, 0+340, 0+420, 0+440) and various colored arrows indicating construction progress. Two photo overlays are visible, each showing a different view of the road construction. The top photo shows a dirt road with a concrete curb and a person walking. The bottom photo shows a dirt road with a concrete curb and a person standing. Both photos have a date and time stamp, a 'Number of Comments on Photo' field, and a 'View Photo' link. The Google Earth logo is in the bottom right corner, and the coordinates 7°41'10.74" N 123°04'21.10" E, elevation 43 m, and eye alt 633 m are shown at the bottom.

3/23/2015 1:28:40 pm 3/23/2015 3:27:55 pm  
1 pm 3 p

0+800

0+250 0+200 0+160 0+340 0+420 0+440

Google earth

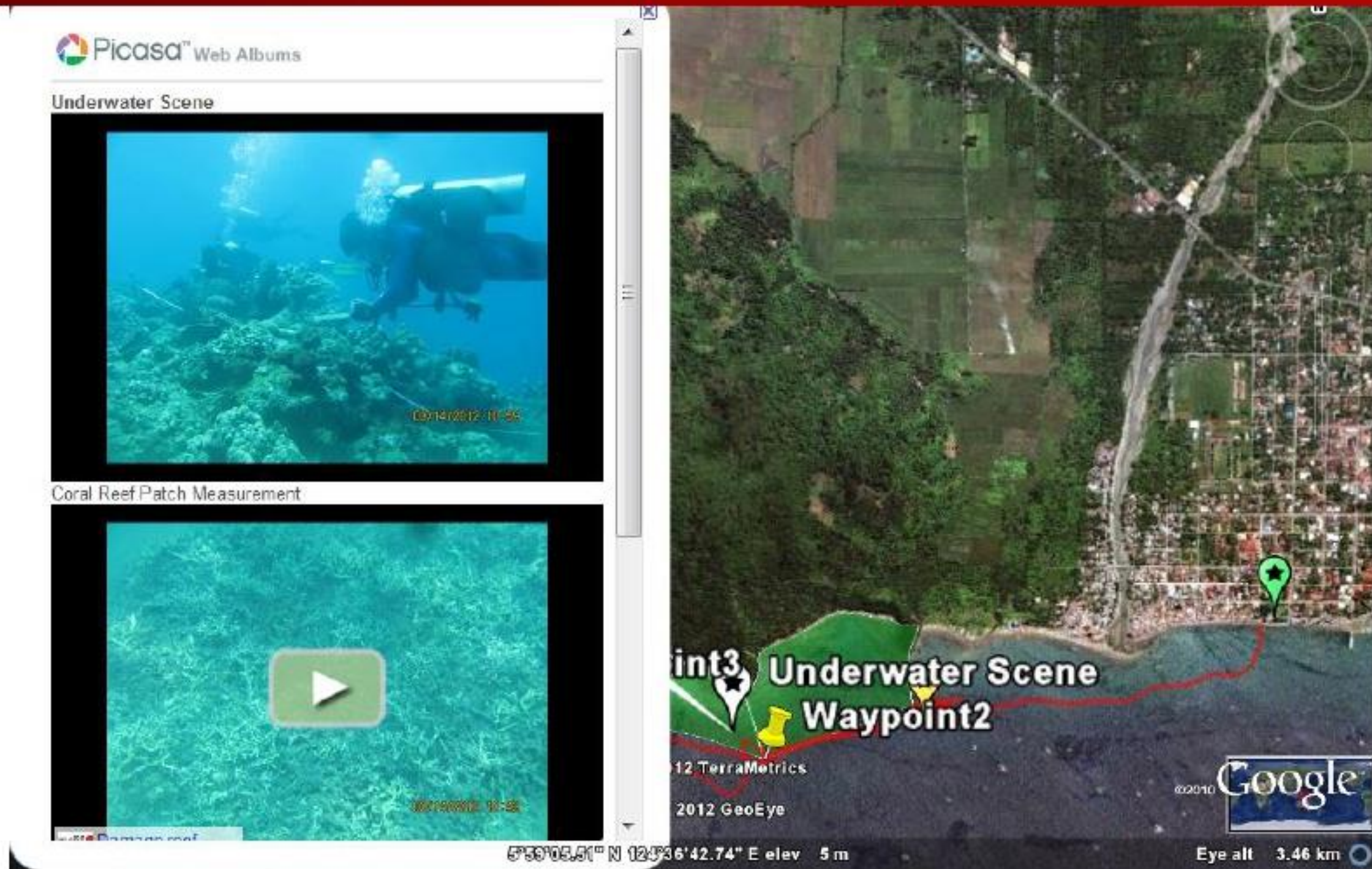
7°41'10.74" N 123°04'21.10" E elev 43 m eye alt 633 m

Date: Jan 22, 2015, 1:35 AM  
Number of Comments on Photo:0  
[View Photo](#)

Date: Mar 23, 2015, 5:44 AM  
Number of Comments on Photo:0  
[View Photo](#)



# Geo-Tagging: An Innovative Tool To Enhance Transparency and Supervision

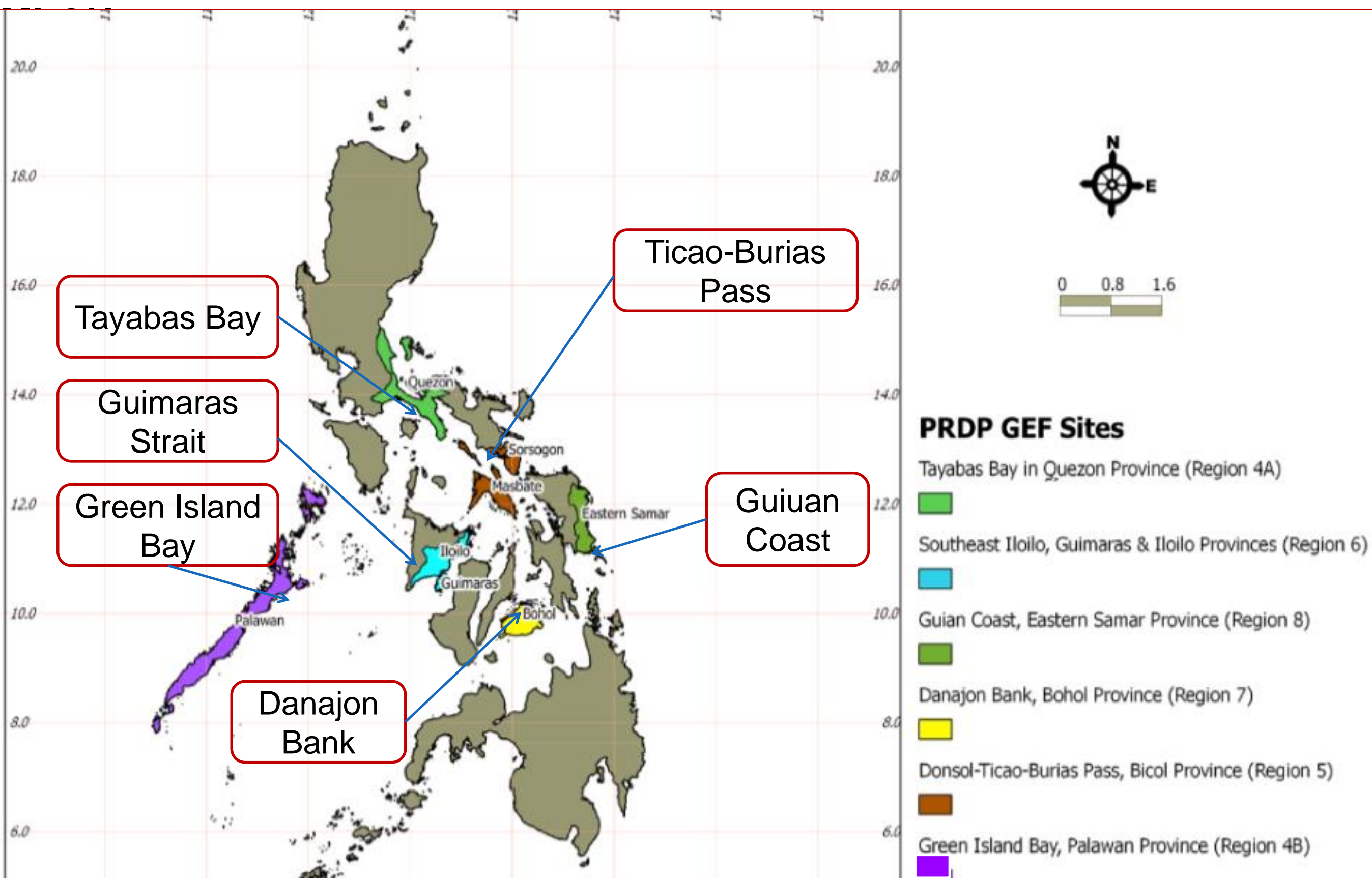


Geo-tagging: track / area of Marine Sanctuary Rehab subproject in relation to underwater photos.



# Global Environmental Facility (GEF) Grant Activities

**Scope: 33 MPAs in six (6) target sites involving seven (7) PLGUs and 21**





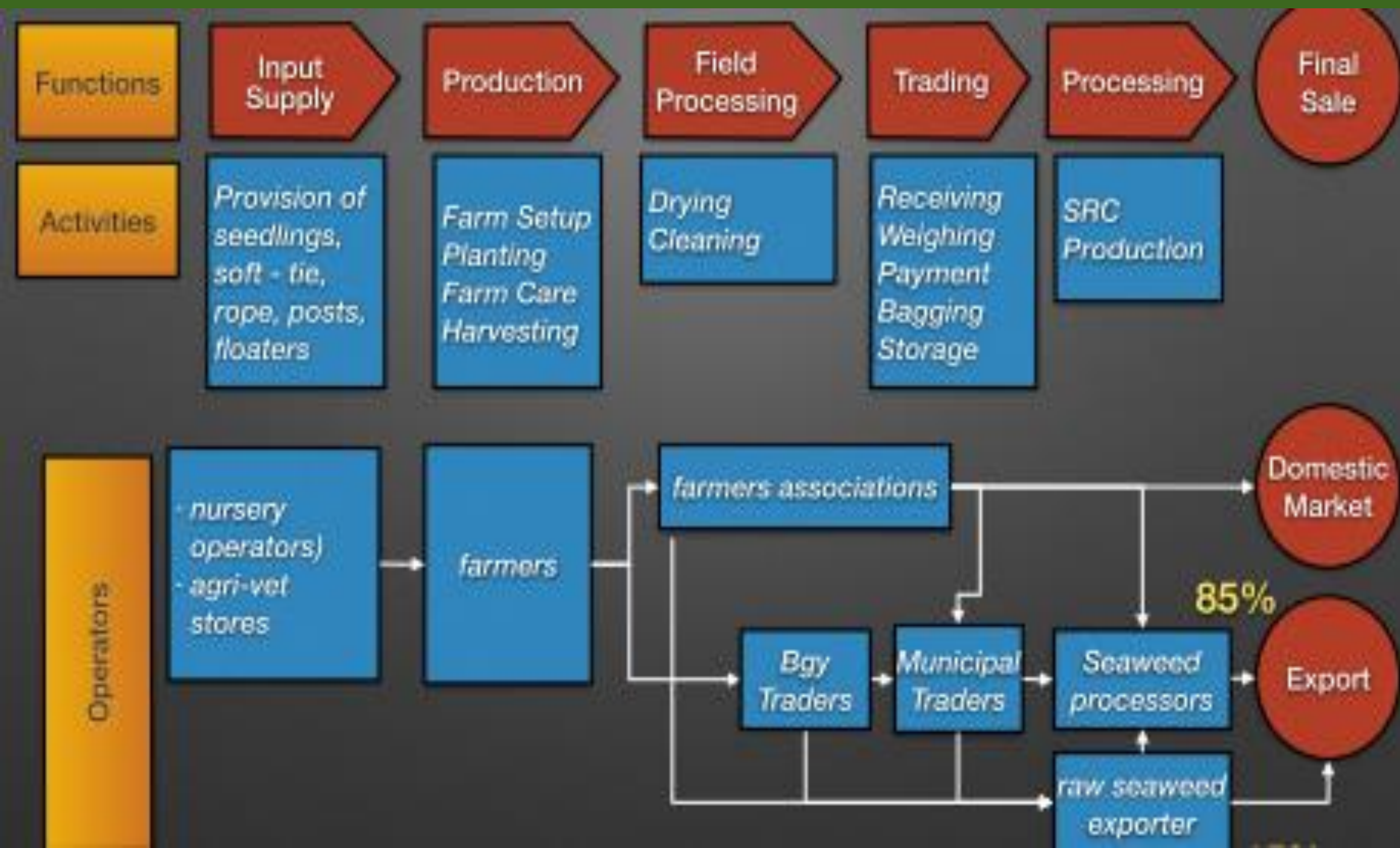
# **Interventions in Guimaras**

PRDP provides funding support to the P/MLGUs and partner Proponent Groups (PGs) covering logistics on seaweeds production, infrastructure, marketing and other necessary support facilities (such as dryer, processing facilities, etc.)

Through PRDP, in-depth technical assistance will be provided to the PGs to enhance their skills and broaden their knowledge on various practical climate change-smart strategies and methods on seaweeds farming and production towards sustainable productivity and enterprise operations;



# Seaweeds Value Chain Analysis





# **THE Guimaras Seaweeds Production and Marketing Project of the Punobolon United Fishermen Association (PUFA)- Proponent Group**

*Similar to other PRDP-GEF target sites, the partner Proponent Groups (PGs) are also the local managers of their existing Marine Protected Area (MPA) – the local stewards towards protection and conservation of their coastal and marine resources*



# Target Outcomes

**The Proponent Group (PG) aims to increase each member's annual income by 58.27%, from USD 1,651.34 to USD 2,613.59\*;**

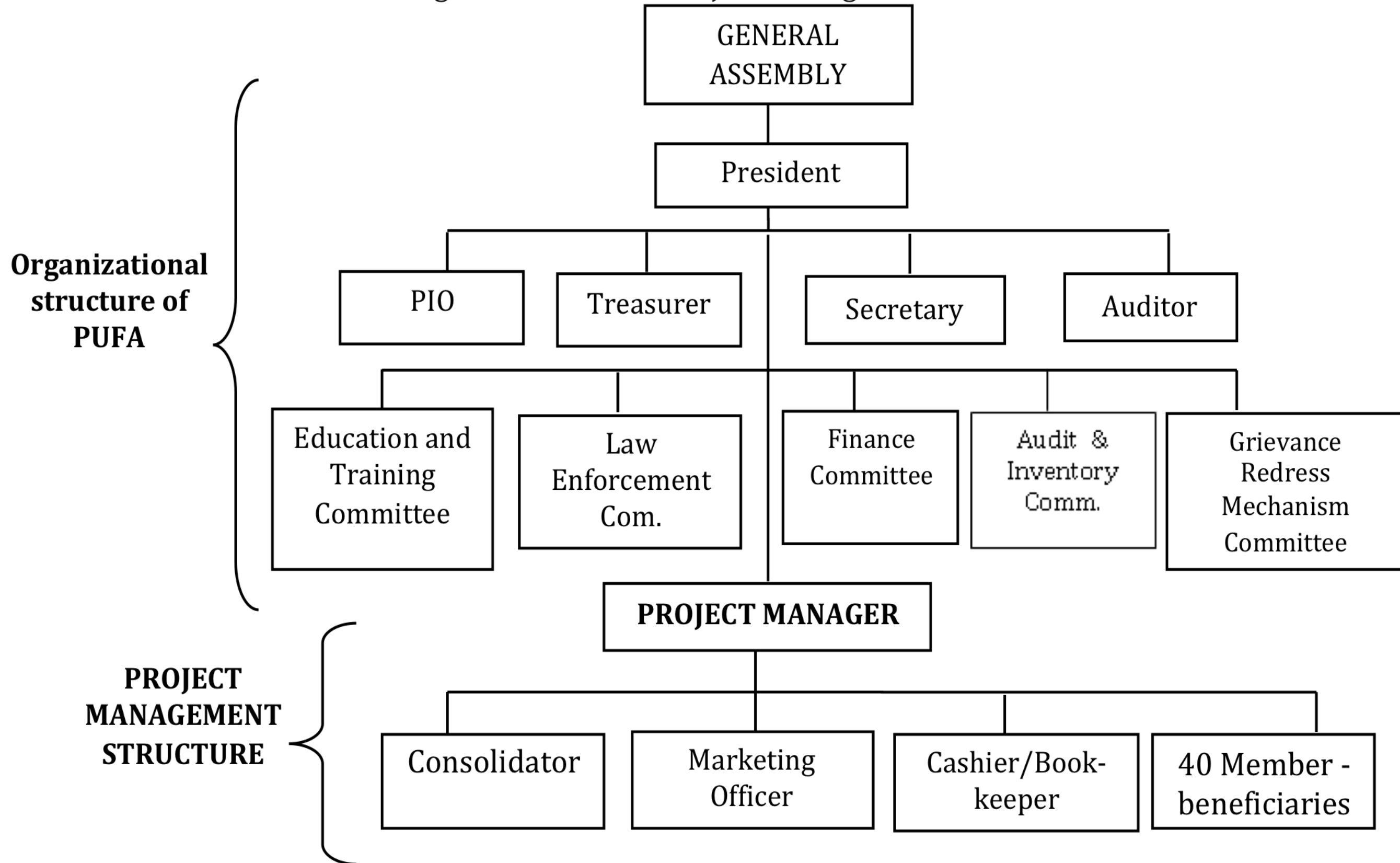
**Produce high quality Raw Dried Seaweeds estimated at 73.75 MT- annually from a four (4) hectares seaweeds farm;**

**Reduce fishing pressure within the coastal areas in the locality, thereby increase in fish diversity and coastal ecosystems & habitats regeneration & recovery in the area.**

*\*total production in 5 cycles per year  
from a 4-hectare seaweed farm*



# PUFA's Organizational and Project Management Structure





# Cultured Species



## ***Kappaphycus striatum***

Previously known as *Eucheuma alvarezii*, *Eucheuma cottonii*

**(cottonii in commerce)**

Locally known as “Sacol” variety



## ***Kappaphycus alvarezii***

**(cottonii in commerce)**

Locally known as “Guso” in the Visayas region and “Timbalang” in the Mindanao region



# Management and Current Farming Methods

**Fixed off Bottom or Stake Method**

**Floating Monoline Method**

**Vertical Line Method**

**Floating Raft Method**



# Thank you

visit us at  
[www.daprdp.net](http://www.daprdp.net)