



## WORKSHOP

**Contribution of Valuation Economy  
Study to the zoning process for  
proposed Tun Mustapha Marine  
Park (TMP) and Semporna Marine  
Spatial Planning**

**Da Nang Vietnam  
November 2015**

**Da Nang Vietnam  
November 2015**





## TMP – BACKGROUND

**Location:** Kudat, Pitas and Marudu districts in Sabah, Malaysia within the Coral Triangle

**Area:** About 1 million hectares; more than 50 islands and islets

**Population:** 80,000 coastal and island dwellers – livelihoods rely heavily on this area (poverty and above average population growth rates)

**Conservation Status:**

2001 – Identified as a Priority Conservation Area in the Sulu-Sulawesi Marine Ecoregion; ranked Globally Significant

2003 – Proposed by the Sabah State Government for listing as Tun Mustapha Park

2010 – Sabah Parks and Sabah Biodiversity Centre shared at CBD COP10 intention to gazette TMP by 2015



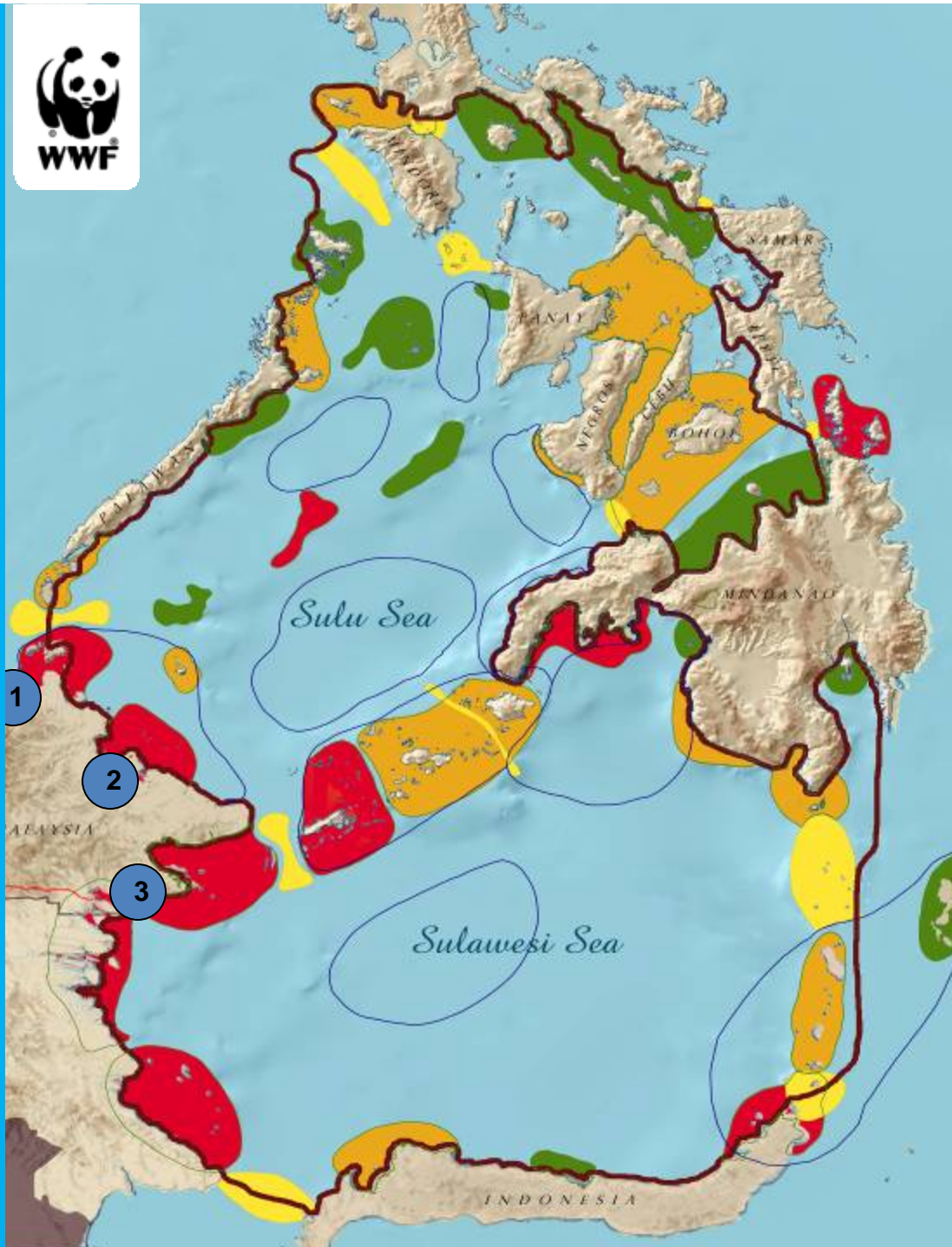


Data SIO, NOAA, U.S. Navy, NGA, GEBCO  
Image Landsat  
© 2015 Google  
US Dept of State Geographer

Google Earth

Lihiman Island





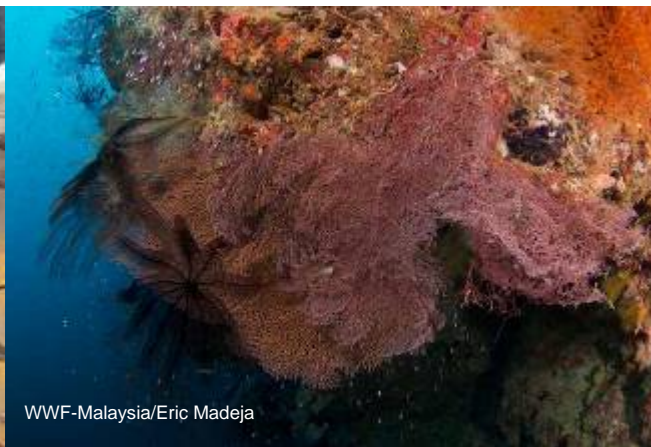
## The Sulu Sulawesi Marine Ecoregion: The Apex of the Coral Triangle

- Globally outstanding
- Regionally outstanding
- Subregionally outstanding



## TMP BIODIVERSITY VALUES

- Hard corals: 252 species
- Fish: 350 species
- Endangered Green sea turtles, Dugongs
- Primary rainforests, coral reefs, mangroves, and seagrass beds
- **The largest marine protected area (MPA) in Malaysia, measuring about 1 million hectares. SIZE DOES MATTER!**
- Second largest coral reef concentration in Malaysia, after Semporna





## TMP ECONOMIC VALUES – Valuation Study done in 2011

### The Total Economic Values for three scenarios:

TMP with <b>no proposed extractive projects</b> -	RM 1.47 billion
TMP <b>with proposed extractive projects</b> -	RM 1.56 billion
TMP with <b>no proposed extractive projects</b> but <b>with ecotourism</b> -	RM1.81 billion



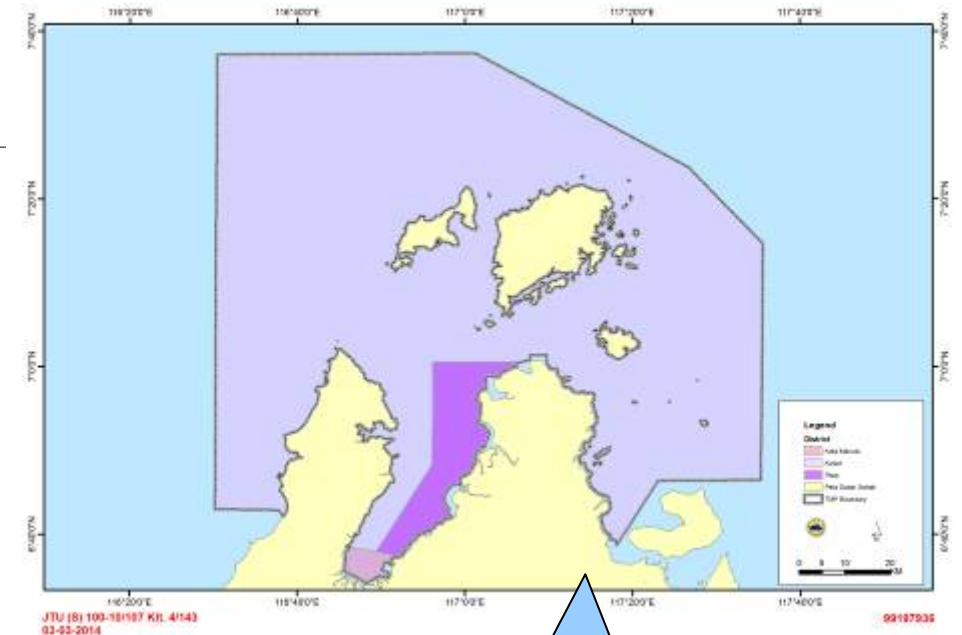




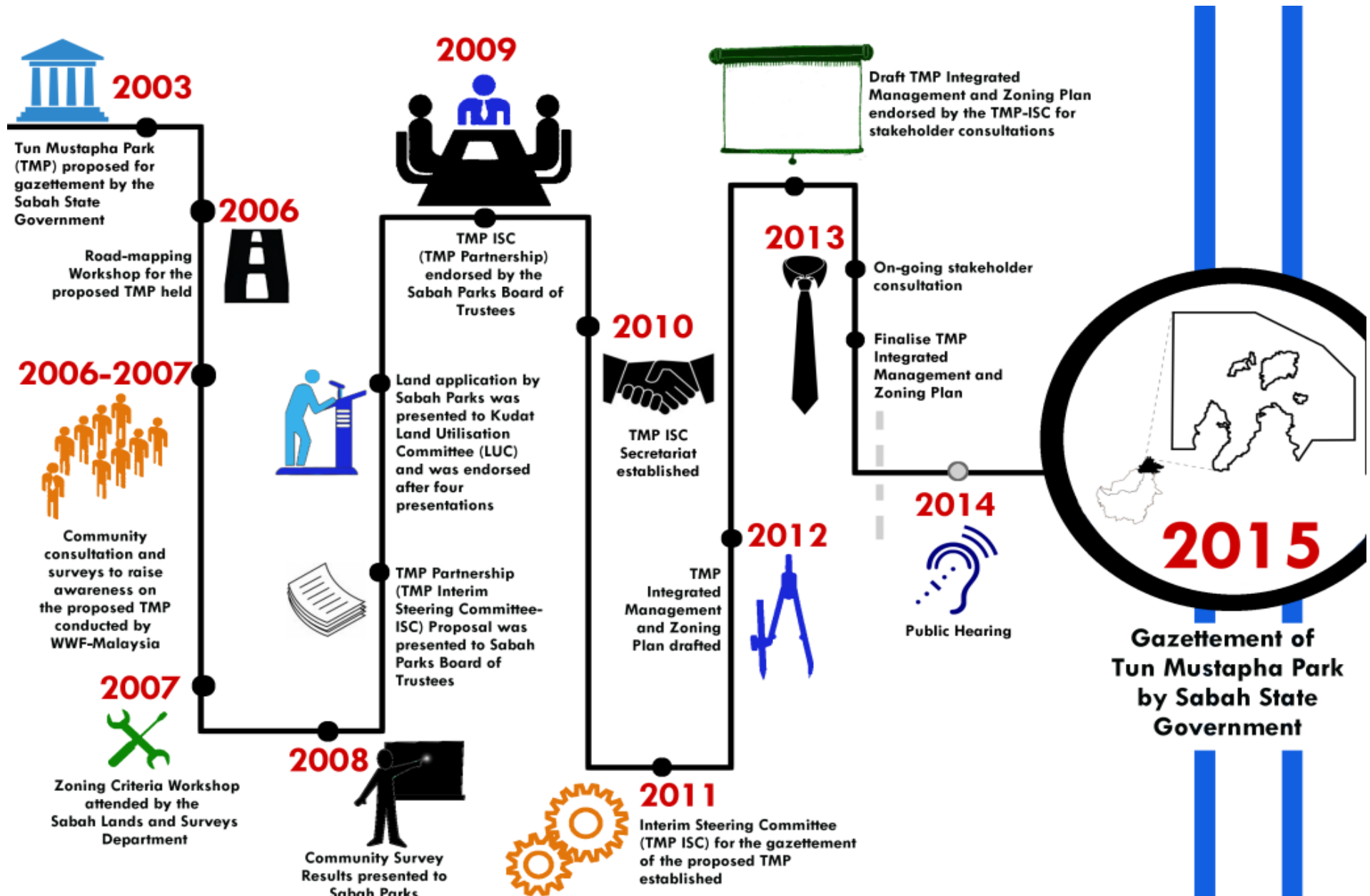
## BENEFITS OF GAZETTING TMP

- Food security – commercial fisheries managed, local community use and no-take zones established
- Socio-economic future of communities sustained and improved
- Ecotourism development potential
- Regulated coastal development

**Creates a legal platform for a concerted and collaborative effort to sustain and improve livelihoods, conserve biodiversity, manage resource use and extraction via a multiple-use park approach. Model for managing future marine protected areas in Malaysia.**



# Roadmap to Gazettement of TMP







## Launching of Semporna Marine Spatial Planning 3<sup>rd</sup> June 2015







# MoU on nation's first Marine Spatial Planning signed



Jaujan (back row, 3rd right) and Matus (back row, 2nd left) with documents between Murshidi (left) and Dr Sundari (right) at the signing ceremony.

By ERIC BAGANG  
eric@newsabhtimes.com.my

KOTA KINABALU: A new Memorandum of Understanding (MoU) has been signed between the Town and Regional Planning Department (TRPD) and the WWF (Worldwide Fund for Nature) Malaysia on the country's first Marine Spatial Planning.

With the signing, they are committing to the Semporna Marine Spatial Planning (SMSP) process to further protect the Semporna Priority Conservation Area (PCA).

WWF Malaysia's conservation director, Dr Sundari Ramakrishna said that Semporna PCA is recognised for having the highest marine biodiversity in the world, thus, worthy of protection and management.

"The proposed SMSP strategy is timely to deliver a balanced approach for the demands of development in Semporna PCA, protect marine ecosystems, and achieve social and economic objectives in an open and planned manner."

"Marine Spatial Planning is a new concept in Sabah, which makes the SMSP a pioneer approach. It builds on and strengthens previous efforts to improve planning of marine spaces in a more integrated and collaborative manner."

The launch of the SMSP will serve as a platform to inform the public of our intentions on scoping a marine spatial plan for Semporna," she said.

The spatial plan, according to her, is integrated, holistic and dynamic and it can change within certain limits.

Dr Sundari said among the early recommendations for Semporna PCA is to have the area protected under legal legislations of the marine environment or local legislations.

TRPD director, Murshidi Sapie said the plan had been introduced worldwide as an increasingly important tool to coordinate marine resources.

"There is growing interest in using spatial planning to contribute towards the delivery of sustainable development objectives in the marine environment and to manage the competing and often conflicting demands upon the sea," he said.

And, he also explained that a marine spatial plan seeks to get all stakeholders in a marine area to work together and establish vision, goals, objectives and strategies for the area.

Among others, he said, a marine spatial plan also seeks to provide a basis for integration

with planning on land. "The plan will save time and money on matters to do with the marine environment."

"It also helps make best locations for it where new development is required."

"Of course there is scientific data analysis, zoning and mapping."

Meanwhile, Sul Datuk Dr Jaujan Sa said the signing of the MoU would properly zone marine resources to facilitate management of ecosystem and biodiversity.

"We need to look at the marine environment as a whole and not just the land area. We need to look at the marine environment as a whole and not just the land area."

"We need to look at the marine environment as a whole and not just the land area. We need to look at the marine environment as a whole and not just the land area."

"We need to look at the marine environment as a whole and not just the land area. We need to look at the marine environment as a whole and not just the land area."

"We need to look at the marine environment as a whole and not just the land area. We need to look at the marine environment as a whole and not just the land area."

"We need to look at the marine environment as a whole and not just the land area. We need to look at the marine environment as a whole and not just the land area."

"We need to look at the marine environment as a whole and not just the land area. We need to look at the marine environment as a whole and not just the land area."

"We need to look at the marine environment as a whole and not just the land area. We need to look at the marine environment as a whole and not just the land area."

"We need to look at the marine environment as a whole and not just the land area. We need to look at the marine environment as a whole and not just the land area."

"We need to look at the marine environment as a whole and not just the land area. We need to look at the marine environment as a whole and not just the land area."

"We need to look at the marine environment as a whole and not just the land area. We need to look at the marine environment as a whole and not just the land area."

"We need to look at the marine environment as a whole and not just the land area. We need to look at the marine environment as a whole and not just the land area."

"We need to look at the marine environment as a whole and not just the land area. We need to look at the marine environment as a whole and not just the land area."

"We need to look at the marine environment as a whole and not just the land area. We need to look at the marine environment as a whole and not just the land area."

"We need to look at the marine environment as a whole and not just the land area. We need to look at the marine environment as a whole and not just the land area."

Daily Express  
4 June 2015  
Page 4

## MSP for Semporna first in the country

Hayati Ozkulifli

KOTA KINABALU: Sabah is very fortunate to be selected to launch a Marine Spatial Plan (MSP) for Semporna, the first in the country, to provide for better ocean management and sustainable use of marine resources. The inaugural launch marked a solid partnership between the Worldwide Fund for Nature (WWF) Malaysia and the Town and Regional Planning Department (TRPD) and in committing to the establishment of the Semporna Marine Spatial Planning (SMSP) process.

TRPD director, under Local Government and Housing Ministry, Datuk Murshidi Sapie, on Wednesday signed a Memorandum of Understanding (MoU) Agreement with WWF-Malaysia represented by its Conservation Director Dr Sundari Ramakrishna in the historical event for Sabah and the country.

Sulabayan Assemblyman Datuk Jaujan Sambalung, together with the ministry's Permanent Secretary Datuk Matus Sator witnessed the exchange of documents between Murshidi and Dr Sundari at the launching of the SMSP process.

"MSP is a process that brings together multiple users or stakeholders of a marine area such as the local residents, fishermen, government and industries, among others, to make informed and coordinated decisions about how to use marine resources sustainably," he said.

"The launch of the SMSP process is a new concept in Sabah which makes the SMSP a pioneer in this important approach."

"MSP is a process that brings together multiple users or stakeholders of a marine area such as the local residents, fishermen, government and industries, among others, to make informed and coordinated decisions about how to use marine resources sustainably," he said.

"The launch of the SMSP process is a new concept in Sabah which makes the SMSP a pioneer in this important approach."

"MSP is a process that brings together multiple users or stakeholders of a marine area such as the local residents, fishermen, government and industries, among others, to make informed and coordinated decisions about how to use marine resources sustainably," he said.

"The launch of the SMSP process is a new concept in Sabah which makes the SMSP a pioneer in this important approach."

"MSP is a process that brings together multiple users or stakeholders of a marine area such as the local residents, fishermen, government and industries, among others, to make informed and coordinated decisions about how to use marine resources sustainably," he said.

"The launch of the SMSP process is a new concept in Sabah which makes the SMSP a pioneer in this important approach."

"MSP is a process that brings together multiple users or stakeholders of a marine area such as the local residents, fishermen, government and industries, among others, to make informed and coordinated decisions about how to use marine resources sustainably," he said.

"The launch of the SMSP process is a new concept in Sabah which makes the SMSP a pioneer in this important approach."

"MSP is a process that brings together multiple users or stakeholders of a marine area such as the local residents, fishermen, government and industries, among others, to make informed and coordinated decisions about how to use marine resources sustainably," he said.

"The launch of the SMSP process is a new concept in Sabah which makes the SMSP a pioneer in this important approach."

"MSP is a process that brings together multiple users or stakeholders of a marine area such as the local residents, fishermen, government and industries, among others, to make informed and coordinated decisions about how to use marine resources sustainably," he said.

"The launch of the SMSP process is a new concept in Sabah which makes the SMSP a pioneer in this important approach."



Jaujan (middle) together with Matus (fourth right) witnessing the exchange of MoU Agreement documents between Murshidi (right), Sundari (left), while M. Karunasanthi (second right) and Dr Chao (hidden behind Murshidi) look on.

that Semporna has the most mushroom coral species in the world and is among the global top five for fish and shrimp species. Hence, these areas need to be further protected and managed sustainably," she said.

Dr Sundari said WWF aims to assist governments and competent organisations to achieve marine protection and sustainable use of marine areas and their resources through the MSP in Semporna while also working to set enabling conditions for the implementation of ecosystem-based integrated ocean management.

"By promoting such ocean management, she said WWF will ensure that ocean use is managed in a manner that is integrated (between sectors, countries and government levels), in a holistic and adaptive manner."

"Moving forward, WWF-Malaysia would also like to see MSP adopted in other areas of conservation in Sabah and Malaysia in general. We believe that this is an important step in conserving our marine biodiversity and in managing our marine resources sustainably," she said.

Meanwhile, Murshidi said the Semporna Marine Spatial Plan development will take just under two years to complete toward an implementation of the first MSP plan together with the Semporna Local Plan.

He thanked WWF-Malaysia for partnering with the department in this drive to develop and eco-based management system for the environment in Semporna and at the same time creating a coordinated planning document for all stakeholder in the district.

"The SMSP will be developed in conjunction with the Semporna Local Plan and this parallel process will ensure that the entire planning work will be integrated whereby appropriate land use zones will be identified to support the need of the various sectors."

"This integrated MSP will be able to provide Semporna with a vision of how this district can grow and expand, given the fact that it is so richly blessed with natural resources from land and sea," he said.

Under the Provision for the Town and Country Planning Ordinance (Sabah Chapter 102) IA Structure Plan, Section 4(2), Murshidi said the State is responsible to manage the territorial waters whereby this enactment requires TRPD to develop planning policies in respect of any development on land and sea within Sabah.

"Marine Spatial Planning principles are no different from Land Use Planning as both types of planning provide the overarching policy framework to guide the placement activities and usage."

"It brings together authoritative spatial data on the environment and its various uses and when translated onto map form, we call them zoning plans, such as the local plans or district plans."

# Malaysia's first Marine Spatial Plan in Semporna

By Murib Morpi

KOTA KINABALU: Sabah is set to mark another milestone in its continuous endeavour to better protect its rich biodiversity, having embarked on an effort to develop and implement the first ever Marine Spatial Plan (MSP) in Malaysia.

To be developed and carried out jointly with WWF-Malaysia, the MSP is a forward looking plan to guide coastal development and marine activities, with the ultimate aim of striking a balance between economic development and protecting the environment within certain areas.

The State Government, through the Town and Regional Planning Department (TRPD), yesterday officially inked its commitment by signing a Memorandum of Understanding (MoU) with WWF-Malaysia for developing the MSP, with Semporna being chosen as the pioneering district.

WWF-Malaysia Conservation Director Dr Sundari Ramakrishna said the MoU was for both parties to work together in charting out the MSP oceanographic techniques and other related technologies and resources.

"We will discuss what are the plans of the local government for coastal areas and the sea. So, we will have to work with the islanders, local communities, agencies at the district and state level," she said to media after the signing.

The signing was held as part of the official launching of Semporna MSP project, which was officiated by Permanent Secretary of the Local Government and Housing Ministry, Datuk Matus Sator, who also witnessed the signing together with Sulabayan member of parliament Datuk Jaujan Sambalung.

"In planning terms, we need to manage these activities by providing them appropriate area to function effectively which means developing integrated marine and land use plans for these areas," he said.

For example, Murshidi said the fishing boats will be able to dock in Semporna's built fishing harbour within an area zoned specifically for fisheries infrastructure and similarly, aquaculture and seaweed farming requirements. In tourism aspects, he said there is a need to conserve the area and develop on areas that are considered fragile or environmentally sensitive or where safety is in doubt.

"We will continue to be the institutional lead in all future MSP implementations, making sure that all the various plans already prepared like the Integrated Coastal Zone Management Plan, Sabah Structure Plan 2033 and Small Island Management Plans will be aligned to form a cohesive approach."

My department will continue to see more jobs up working with different sectors to develop MSP throughout the State, starting first with Semporna, but also looking ahead to the Tun Mustapha Park and other marine areas where development is taking place," Murshidi said.



Town and Regional Planning Department director Murshidi Sapie (left) exchanging the MoU documents with Dr Sundari Ramakrishna, witnessed by Permanent Secretary of the Local Government and Housing Ministry, Datuk Matus Sator (second left) and Sulabayan assemblyman Datuk Jaujan Sambalung (second right) after the signing ceremony yesterday.

"We already have Sabah Structure Plan 2033, which will go to the Cabinet very soon. There is going to be a Semporna Local Plan. This plan must be aligned to the Semporna MSP. If you look at it (Sabah Structure Plan), it's about land use."

"But we should also look at what is happening in the marine sector... how many vessels are you allowing, how many licences, how many tour operators, can you build new resorts there? These things are not dealt with. Everyone has to come together to decide and explain what is going to happen."

"For example, many years down the road, if Petronas is asked to drill oil in Semporna, how far they can go. It is a very deep port, good for them, but we have to limit their activities. That means you don't take too much. But Spatial Plan is an integrated, dynamic plan that

can change within certain limits. So, it's adaptive," added Sundari.

Earlier, in her welcoming speech, Sundari explained that MSP is an operational process to help ensure an integrated, ecosystem-based approach to planning, protection, management and sustainable use of marine areas and their resources.

Effective use of MSP, she said, was needed to address the current lack of coordination and integration of different sectors, level of governments and countries that today undermine the sustainable management of many marine areas.

"By promoting ecosystem-based integrated ocean management, WWF hopes to ensure that ocean use is managed in a manner that is integrated between sectors, countries and government levels, in a holistic

and adaptive manner," she said.

As to why Semporna was chosen, she said the area, particularly the Semporna Priority Conservation Area (SPCA) has the largest concentration of coral reefs in Malaysia.

The SPCA is also located within the Sulu-Sulawesi Marine Ecoregion (SSME), right at the apex of the Coral Triangle.

She said the MSP would provide an adaptive framework that is responsive to the uncertainties associated with complex, heterogeneous and dynamic systems.

As it involves multi-sectoral collaboration and partnership, the MSP will be an effective tool for resolving resource use conflicts as well as facilitating progress of multi-sectoral development.

Moving forward, she said WWF would like to see MSP adopted in other areas of conservation in Sabah and Malaysia in general.

Meanwhile, Jaujan in his speech, proposed TRPD to work with WWF to set up a research and educational centre in Semporna, for conducting related studies and promoting awareness on various local marine life and their importance to the ecosystem as well as the role they could play in economic development of the local communities.

He said the centre could serve as a base for planning and implementing educative programmes for young children, especially those at islands within SPCA, apart from catering for university students and experts to conduct related research on marine biodiversity.

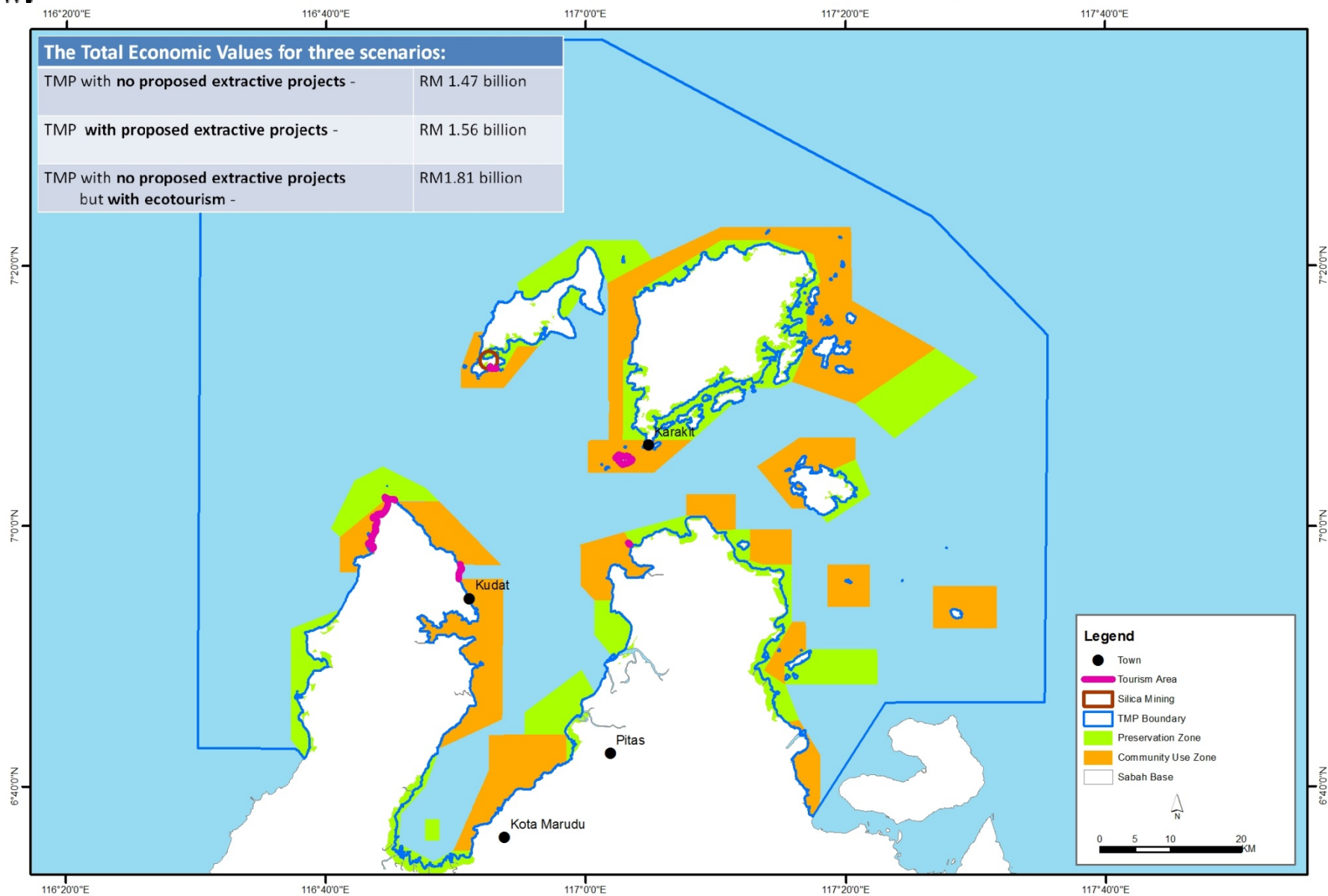
Signing the MoU for TRPD was its director, Murshidi HJ Sapie.

• <http://kinabalu.today.com/index.php/component/content/article/18-latest-news/8396-marine-spatial-planning-launched-to-further-protect-semporna-pca>





## TMP extractive and ecotourism value





# Tourism, Extractive activities or MPA

- Projection of valuation economy (case tourism and mining) in TMP.
- For mining, the resources is still there for future extraction, but no policy to control it.
- Find the economic viable if they going to pursue mining to the park.
- In the case of Marine Spatial Planning they can use compatibility matrix between Extractive mining and tourism as example







# GAP & Challenges

- VE study is based on figures, Marxan is use information in spatial form in any area (need to assign value). So the area needs to be divided by planning unit, and each unit has to be assigning a value for a particular each area.
- Subjectivity from Decision makers is the main factor to identify the gap between economy potential resources and marine spatial planning.
- Translate to the spatial data, Identify what is the cost of ecotourism etc. VE is very much on figures.



# RECOMMENDATIONS

- To the government, what really cost to the government is matter. Government Issue is whether they want this integration? District plan is under local government.
- Community Development need to consider, as human and how they react with certain development and benefit is not being considered yet.
- They way how decision makers see island potential development need to be transparent from beginning.
- Related institution should think out of the box and see their main business integrated with others, exp Environment Department with ICM not only water pollution in the coastal areas, etc.





# Next Actions Needed

- How to use VE data and to get the maximum impact for decision making. Think of using this for a Propose Marine Park and marine Spatial Planning areas.
- Bring people together to discuss the issue, invite best people, best innovative approach that we need to address.
- Integration of zoning and economic, take data and integrate at the different time scale, time frame.
- Find the best momentum to bring the issue in the plate.
- Conduct more micro study related with VE and WTP (for Tourism) and make it applicable for zoning in the Propose Marine Park & MSP areas..



# Thank you

---

[www.panda.org](http://www.panda.org)

[msumampouw@wwf.org.my](mailto:msumampouw@wwf.org.my)

© WWF-Malaysia / Eric Madeja