

Overview of Climate Finance for Adaptation



*Empowered lives.
Resilient nations.*

Prepared by: Global Environmental Finance Unit
UNDP

1. Climate finance needs of countries will be very significant

Costs of Managing Climate Change in Developing Countries

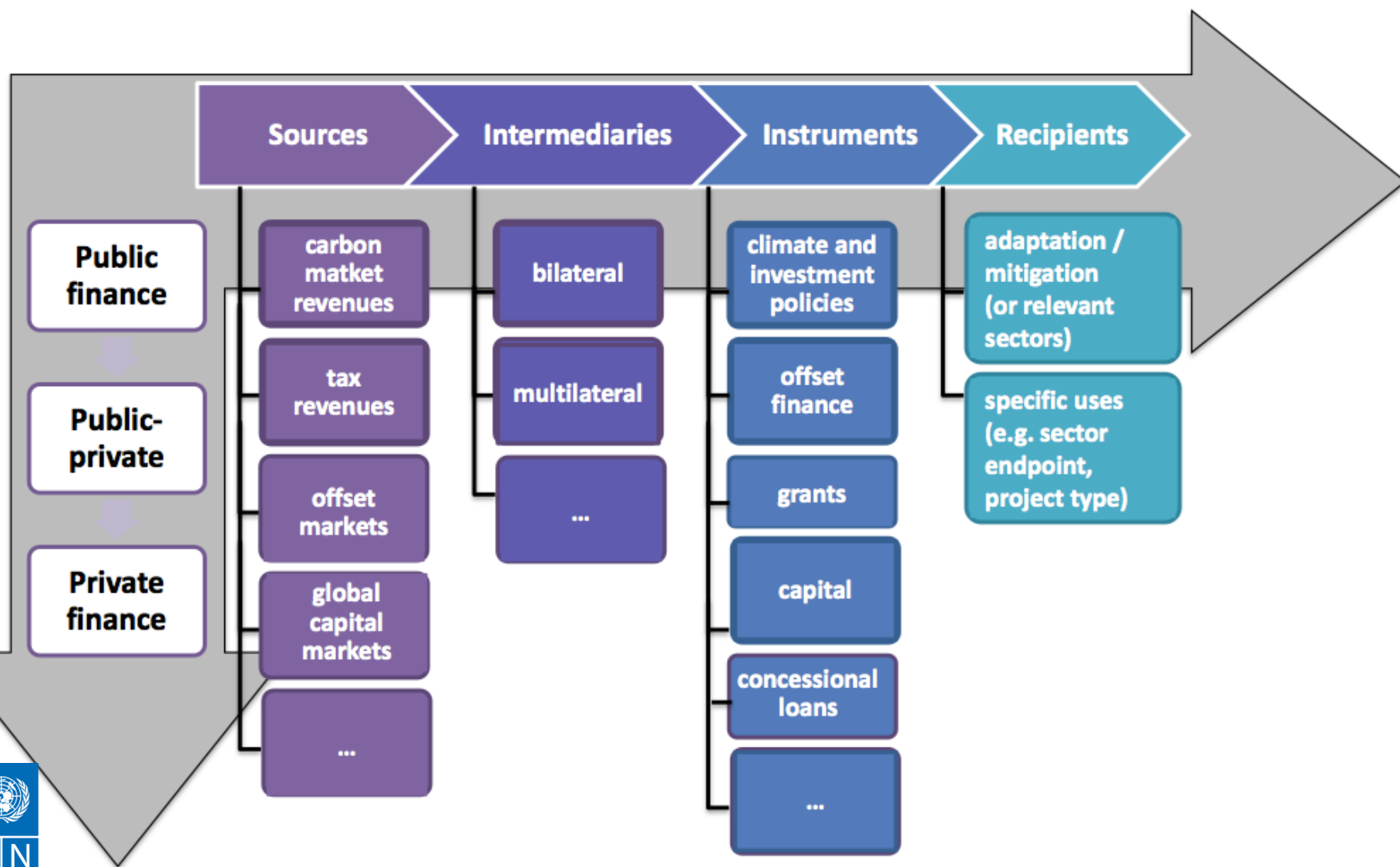
US \$100 billion
per year by 2020



Costs of Adaptation (World Bank and UNFCCC, \$billions to

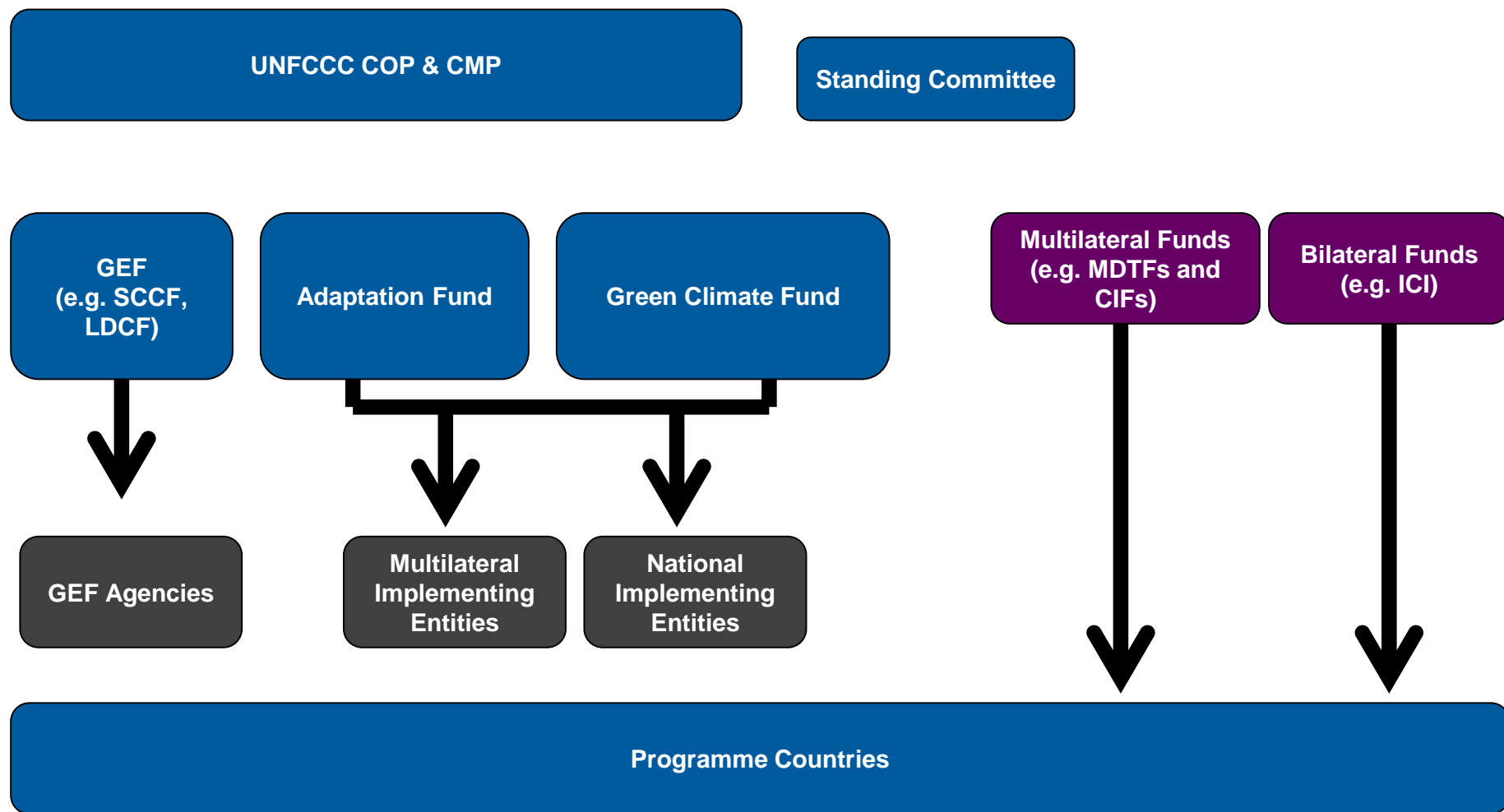
Sector	UNFCCC (2007)	EACC Study Scenario	
		NCAR (wettest)	CSIRO (driest)
Infrastructure	2-41	27.5	13
Coastal zones	5	28.5	27.6
Water supply and flood protection	9	14.4	19.7
Agriculture, forestry, fisheries	7	2.6*	2.5*
Human health	5	2	1.5
Extreme weather events	—	6.7	6.4
Total	28-67	81.5	71.2

Source: EACC, WB 2010



2. Global Climate finance architecture is complex

Climate Finance under the UNFCCC



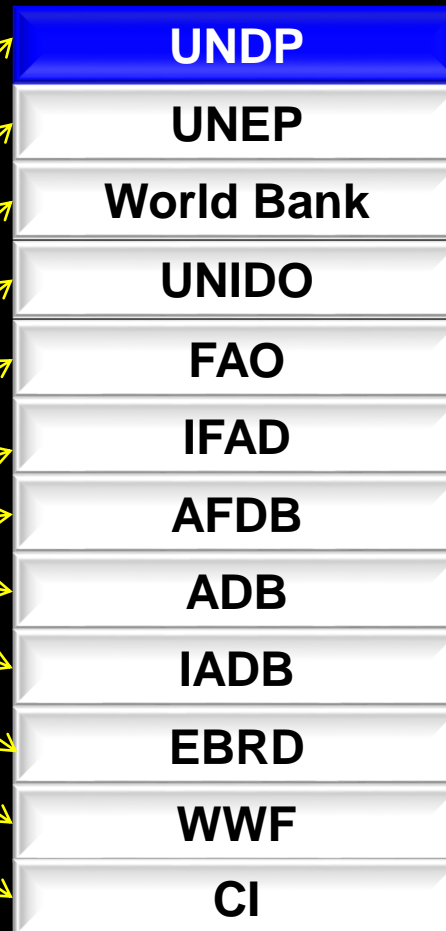
GEF objective: Global Environmental Benefits

LDCF/SCCF: Objective: Adaptation Benefits

GEF Agencies

TA for Project
design and
Implementation
support

142 GEF
eligible
countries



Replenished on 4 year
funding cycle
(GEF-6 = >4 billion USD)

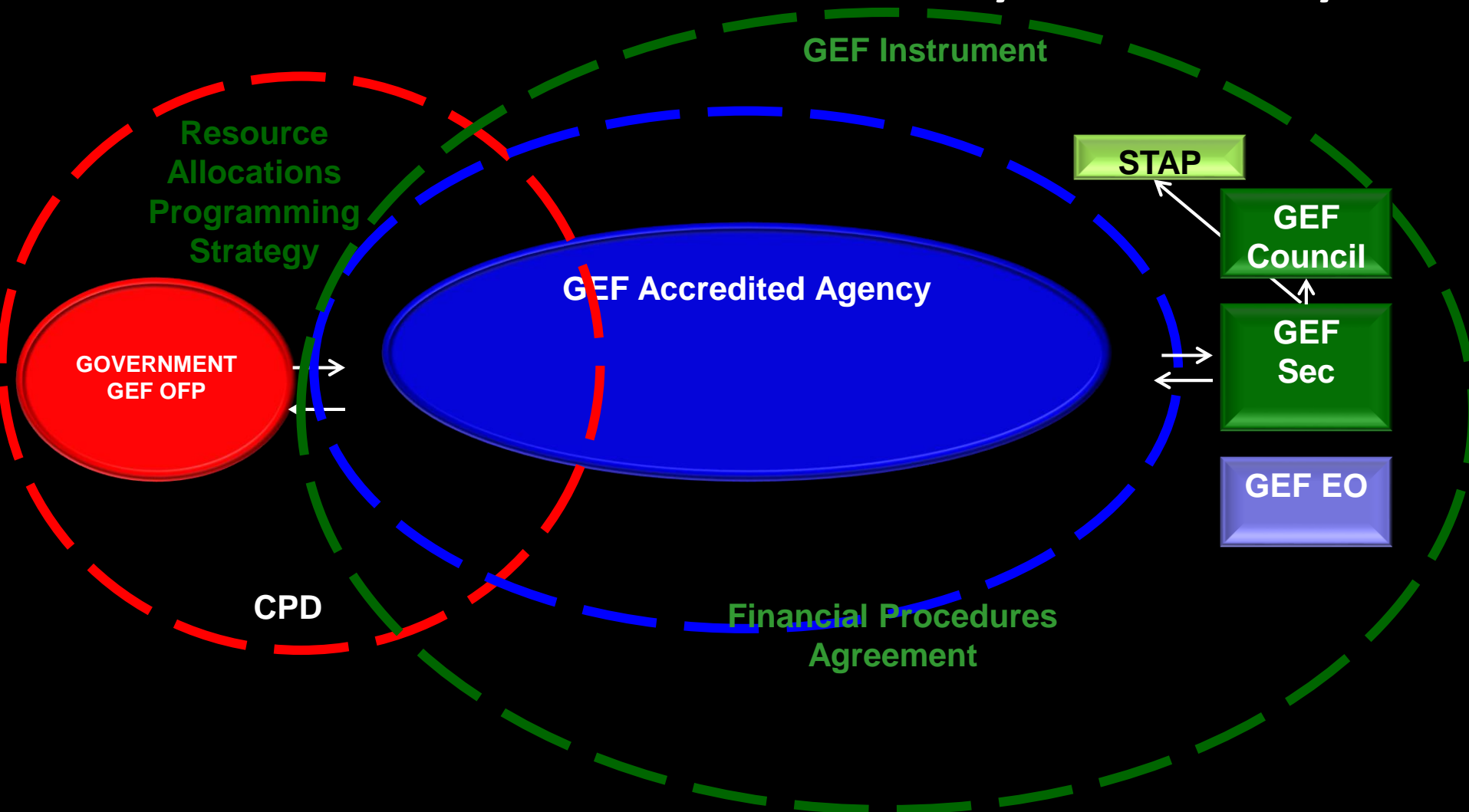
PIF

Project +
fee for
services



GEF has its own:
Governance
Trustees
Policy and Programming
Arrangements

GEF Model: Three-Tier Quality Assurance System



4. There are 5 main global trust funds which countries can access for finance for environment related projects

Global Trust Funds for Climate Change and Environment

GEF Trust
Fund



Special
Climate
Change Fund



Least
Developed
Country Fund
(only for
LDCs)



Adaptation
Fund



ADAPTATION FUND

Green
Climate Fund



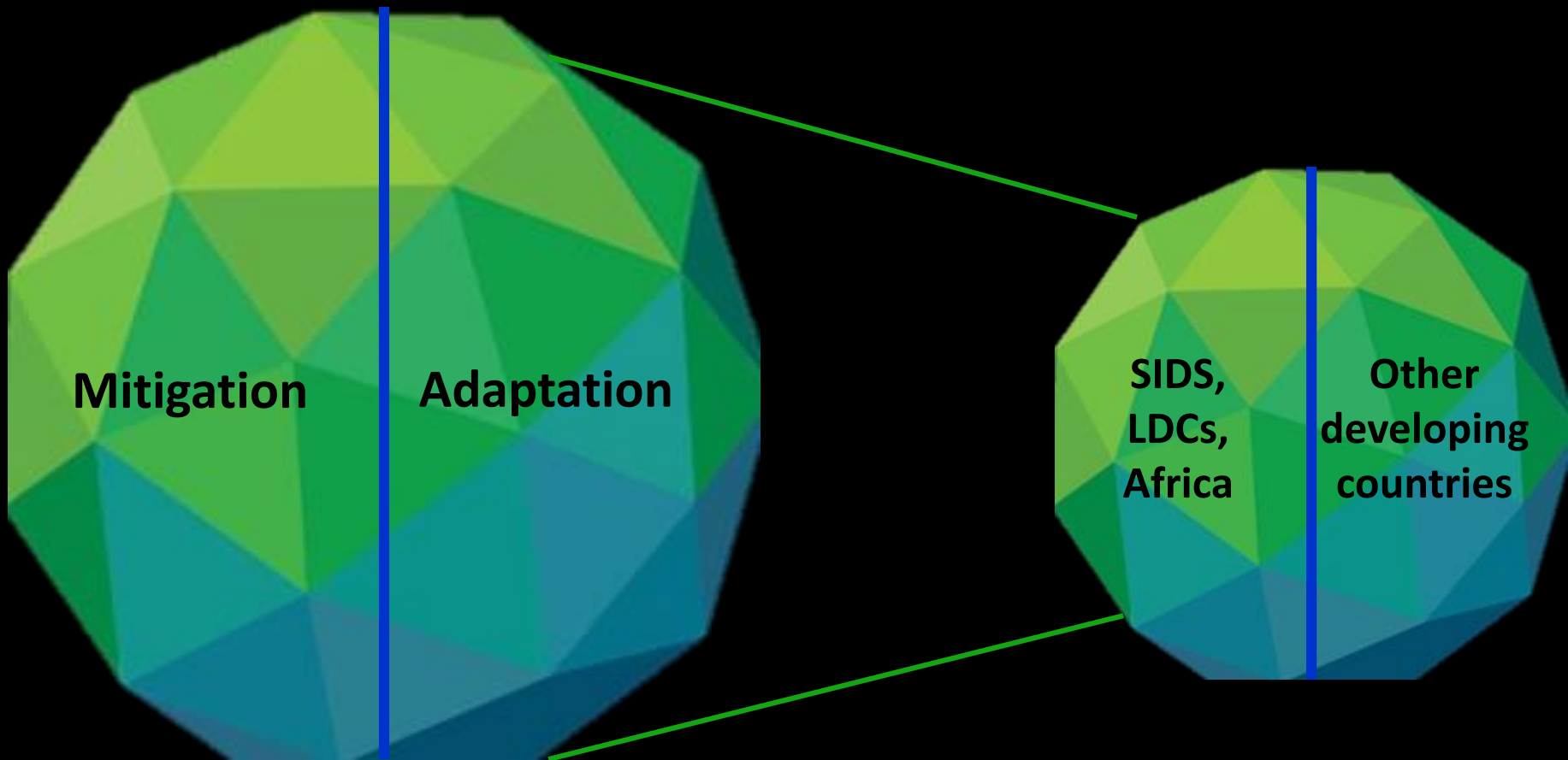
GREEN
CLIMATE
FUND

5. The Green Climate Fund is the latest among these funds



Aims to finance a paradigm shift towards low-emission and climate-resilient pathways

GCF Allocation Framework



Six High Level Investment Criteria



Result areas

MITIGATION

- Increase low emission energy access and power generation
- Increase access to low emission transport
- Reduced emissions from buildings, cities, industries and appliances
- Reduced emissions from Land Use, deforestation, Forest degradation, SFM, conservation and enhancement of C stocks

ADAPTATION

- Increased resilience and enhanced livelihoods of the most vulnerable people, communities and regions.
- Increased resilience of health and well being and food and water security
- Increased resilience of infrastructure and the built environment to CC threats
- Increased resilience of ecosystem and ecosystem services

Size of projects/Activity within a program

Type of Projects	Total Projected Costs (includes co-financing)
Micro	Up to and including 10 million
Small	> 10 million and up to and including 50 million
Medium	> 50 million and up to and including 250 million
Large	> 250 million



GCF and GEF - two sides of the same coin



Proposal from UNFCCC Executive Secretary:



GEF should continue to be a 'foundational force' – opening the way, working across focal areas, ensuring no country is left behind.

GEF should increase investment in adaptation – showing financiers and governments how it can be done in a low-carbon and climate resilient way.

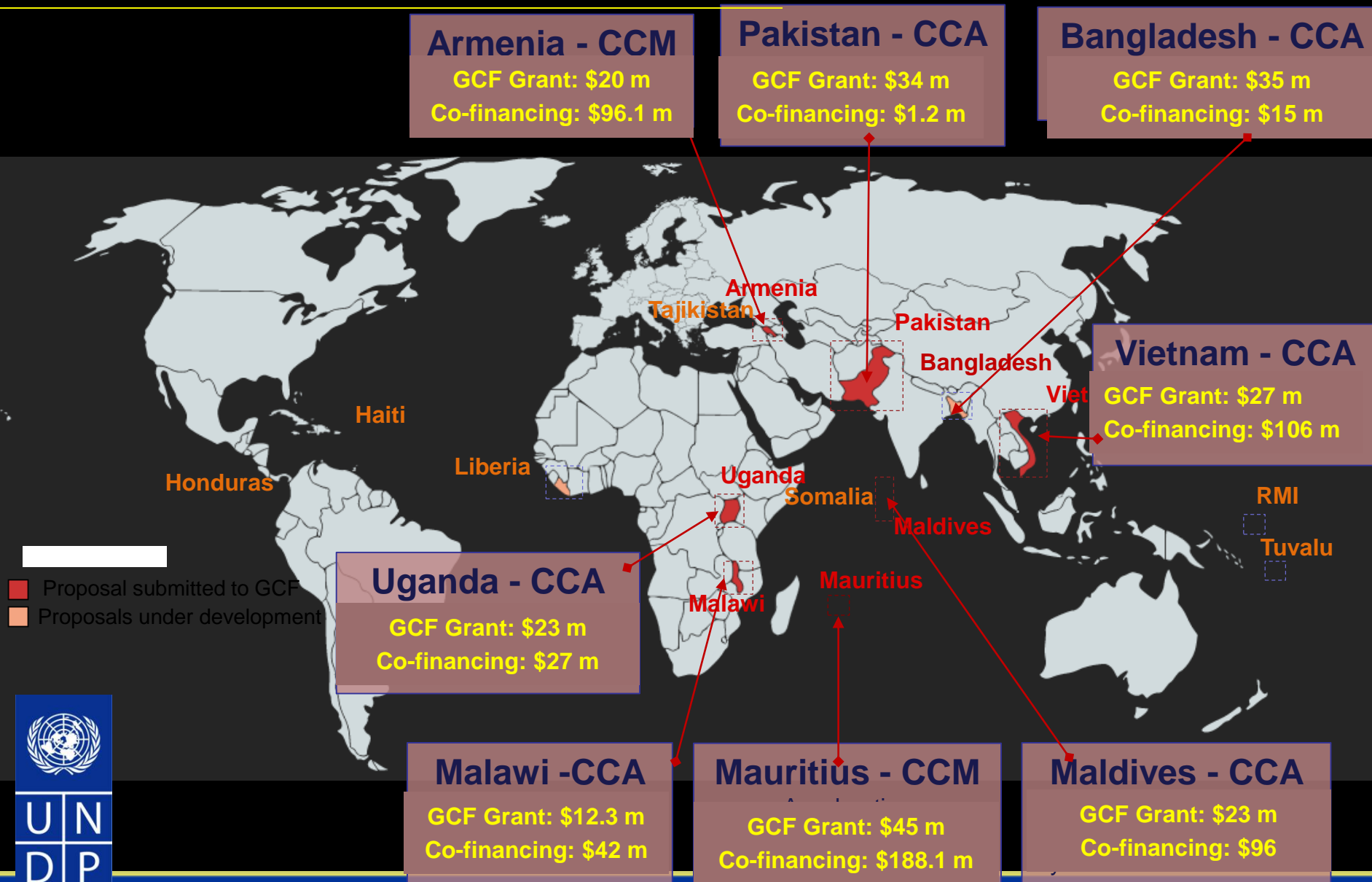


GCF should learn from the GEF and take it to scale



GEF must continue to play a critical role in supporting readiness activities, financing innovation, and catalyzing transformational change.

6. Examples of what countries supported by UNDP are focusing on for climate change adaptation



ISSUE

Sea level rise,
Intensifying storms,
Frequent floods.

ACTIONS

Storm and flood-resilient features for
housing; Regenerating coastal mangrove

EXPECTED IMPACT

Climate-resilient housing
Protection from storm surges
Improved climate data for 30 million people

PARTNERS

Ministry of Agriculture and Rural
Development

AMOUNT

GCF Grant: 26,839,000
Co-financing: 106,323,000\$

Viet Nam

Climate F



Pakistan

ISSUE



Melting of glaciers
Increased risk of GLOFs
7,101,000 people at risk in the region

ACTIONS

Strengthening institutional capacity
Up-scaling climate information and EWS
Developing climate-resilient agricultural techniques

EXPECTED IMPACT

Increased resilience and enhanced livelihoods
696,342 direct beneficiaries
29,233,000 indirect beneficiaries.

PARTNERS

Ministry of Climate Change

AMOUNT

GCF Grant: 33,600,000\$
Co-financing: 1,200,000\$

Climate Finance Overview- 2015. Prepared by: UNDP





ISSUE

Increasing intensity and frequency of climate hazards
Strong impacts on the agricultural sector, 80% of the food production is for subsistence

ACTIONS

Expansion of climate data networks
Dissemination of climate information
Strengthening communities capacities

EXPECTED IMPACT

3 million beneficiaries
Lives saved and reduced damages
Protection of agriculture-based livelihoods.

PARTNERS

Department of Disaster Management Authority

AMOUNT

Malawi

Climate F



UN
DP



ISSUE

Water shortages during the dry season,
Adverse human impacts,
Adverse environmental and social impacts.

ACTIONS

Integrated water supply system
Cost-effective dry season water supply system
Improving groundwater quality.

EXPECTED IMPACT

105,000 beneficiaries,
Health improvements
Wider water availability.

PARTNERS

Ministry of Environment and Energy

AMOUNT

GCF Grant: 23,637,000\$
Co-financing: 96,000,000\$

Maldives

Uganda

ISSUE

Sensitivity of wetlands
2.4 million people use wetlands
for subsistence.



ACTIONS

Restoring wetlands hydrology,
Improving livelihood options,
Improving access to climate
information.

EXPECTED IMPACT

680,000 direct beneficiaries
Improved productivity
Improved water management

PARTNERS

Ministries of Water and Environment,
Agriculture, Animal Industry and
Fisheries,
Uganda National Meteorology
Authority

AMOUNT

Climate Finance Over 2019-2025
Co-financing 26,840,900\$

Prepared by: UNDP



ISSUE

Recurrence of climate shocks
Adverse effects on the VGD programme
Poor women and girls do not access enough food

ACTIONS

Adapting livelihoods to climate change shocks
Establishing women-centered disaster preparedness,
Establishment of a climate adapted VGD.

EXPECTED IMPACT

PARTNERS

Ministry of Women and Children Affairs

AMOUNT

GCF Grant: 35,464,933\$
Co-financing: 15,044,000\$

Bangladesh

Climate F



Q&A

Contact:

Dr. Pradeep Kurukulasuriya
Head- Climate Change Adaptation
Global Environment Finance Unit
Bureau for Policy and Programme Support
UNDP

pradeep.kurukulasuriya@undp.org

